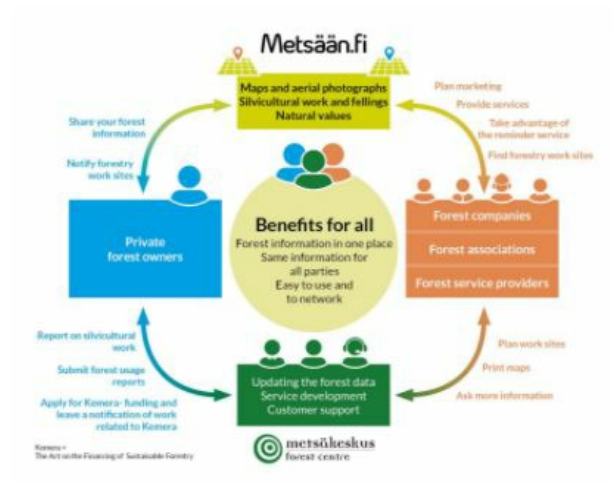


eServices for forest owners and service



Metsään.fi provides eServices for forest owners and forestry service providers. The online application shows the silvicultural possibilities of each forest estate and their compartments.

The Metsään.fi-service included in the Metsään.fi-website is a free e-service for forest owners and corporate actors (companies, associations and service providers) in the forest sector, which aim is to support active decision-making among forest owners by offering forest resource data and maps on forest properties, by making contacts with the authorities easier through online services and to act as a platform for offering forest services, among other things. In addition to the Metsään.fi-service, the website includes open forest data services that offer the users national forest resource data that is not linked with personal information. Metsään.fi is quite easy to use and it provides the forest owner many new flexible services. It is safe system because strong identification is needed. When you log in to

the Metsään.fi service, you will see all the forest holdings you own. You will also see the jointly owned forest holdings where you are a single shareholder. You have one place where you can take care of your forest affairs and plan the management of your forest assets. You will have free access to forest data and a transaction service collected with public funds.

DETAILS

HERKUNFT DES HOLZES

--

ART DES HOLZES

--

ART DES BETROFFENEN HOLZES

--

AUSWIRKUNGEN AUF UMWELT UND BIODIVERSITÄT

Very positive, shows the environmental values (habitats of special importance) in the compartments of the forest estate

EINKOMMENSEFFEKT

Positive, forest owners sell wood and services providers get income

VERWERTUNGSPOTENZIAL

--

NABE

--

WIRTSCHAFTLICHE AUSWIRKUNGEN

Communication between forest owners and forestry service providers

SPEZIFISCHES WISSEN ERFORDERLICH

MOBILISIERUNGSPOTENZIAL

--

POTENZIAL FÜR NACHHALTIGKEIT - WERT

--

LEICHTE IMPLEMENTIERUNG

--

LEICHTE IMPLEMENTIERUNG - BEWERTUNG

Einfach

WICHTIGE VORAUSSETZUNGEN

--

ART DER VERANSTALTUNG, AUF DER DIESE BPI VORGESTELLT WURDE

--

ARBEITSPLATZEFFEKT

Positive, new jobs for service providers

KOSTEN DER IMPLEMENTIERUNG (EURO - €)

--

Not any specific knowledge needed

MEHR DETAILS

ANGESPROCHENE HERAUSFORDERUNG

--

	DOMÄNE	ART DER LÖSUNG
	Bestandsaufnahme, Bewertung, Überwachung Waldmanagement, Waldbau, Ökosystemleistungen, Resilienz	Beratungs- und Servicetools für Waldbesitzer

SCHLÜSSELWÖRTER

virtual tool

3D

HERKUNFTSLAND

--

DIGITALE LÖSUNG

Ja

INNOVATION

Nein

UMFANG DER ANWENDUNG

National

ANFANGS- UND ENDJAHR

2012 -

KONTAKTDATEN

EIGENTÜMER ODER AUTOR

Finnish Forestry Center

Minttu Koponen

minttu.koponen@metsakeskus.fi

<https://www.metsakeskus.fi/en>

REPORTER

Lapland University of Applied Sciences

Merja Laajanen

merja.laajanen@lapinamk.fi

REFERENCES AND RESOURCES

HAUPT-WEBSITE

<https://www.metsakeskus.fi/fi/asiointi/metsaanfi>

PROJEKT-WEBSITE

--

PROJEKT-REFERENZ

--

RESSOURCEN

PROJEKT, IN DESSEN RAHMEN DIESES FACTSHEET ERSTELLT WURDE

Rosewood 4.0

BEITRAGSDATUM

12 Aug. 2021



This project has received funding from the European Union's Horizon 2020 research and innovation programme under grant agreement No. 862681

A TOOL FROM ROSEWOOD 4.0, DESIGNED AND DEVELOPED BY

