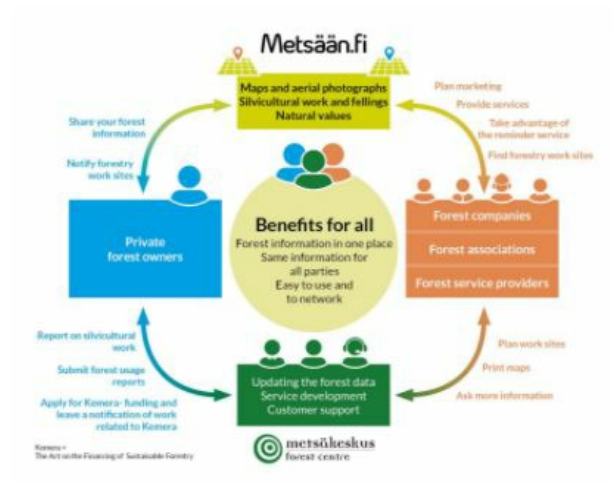


# eServices for forest owners and service



*Metsään.fi provides eServices for forest owners and forestry service providers. The online application shows the silvicultural possibilities of each forest estate and their compartments.*

The Metsään.fi-service included in the Metsään.fi-website is a free e-service for forest owners and corporate actors (companies, associations and service providers) in the forest sector, which aim is to support active decision-making among forest owners by offering forest resource data and maps on forest properties, by making contacts with the authorities easier through online services and to act as a platform for offering forest services, among other things. In addition to the Metsään.fi-service, the website includes open forest data services that offer the users national forest resource data that is not linked with personal information. Metsään.fi is quite easy to use and it provides the forest owner many new flexible services. It is safe system because strong identification is needed. When you log in to

the Metsään.fi service, you will see all the forest holdings you own. You will also see the jointly owned forest holdings where you are a single shareholder. You have one place where you can take care of your forest affairs and plan the management of your forest assets. You will have free access to forest data and a transaction service collected with public funds.

## DETAILS

---

### ORIGIN OF WOOD

--

### TYPE OF WOOD

--

### KIND OF WOOD CONCERNED

--

### IMPACT ON ENVIRONMENT & BIODIVERSITY

Very positive, shows the environmental values (habitats of special importance) in the compartments of the forest estate

### INCOME EFFECT

Positive, forest owners sell wood and services providers get income

### EXPLOITATION POTENTIAL

--

### HUB

--

### ECONOMIC IMPACT

Communication between forest owners and forestry service providers

### SPECIFIC KNOWLEDGE NEEDED

### MOBILIZATION POTENTIAL

--

### SUSTAINABILITY POTENTIAL - VALUE

--

### EASE OF IMPLEMENTATION

--

### EASE OF IMPLEMENTATION - EVALUATION

Easy

### KEY PREREQUISITES

--

### TYPE OF EVENT WHERE THIS BPI HAS BEEN FEATURED

--

### JOB EFFECT

Positive, new jobs for service providers

### COSTS OF IMPLEMENTATION ( EURO - € )

--

Not any specific knowledge needed

## MORE DETAILS

---

### CHALLENGE ADDRESSED

--

### DOMAIN

Inventory, monitoring  
Forest management, ecosystem, resilience

### TYPE OF SOLUTION

Advice and services for forest owners

### KEYWORDS

virtual tool  
3D

### DIGITAL SOLUTION

Yes

### INNOVATION

No

### COUNTRY OF ORIGIN

--

### SCALE OF APPLICATION

National

### START AND END YEAR

2012 -

## CONTACT DATA

---

### OWNER OR AUTHOR

Finnish Forestry Center  
Minttu Koponen  
minttu.koponen@metsakeskus.fi  
<https://www.metsakeskus.fi/en>

### REPORTER

Lapland University of Applied Sciences  
Merja Laajanen  
merja.laajanen@lapinamk.fi

## REFERENCES AND RESOURCES

---

### MAIN WEBSITE

<https://www.metsakeskus.fi/fi/asiointi/metsaanfi>

### RESOURCES

### PROJECT WEBSITE

--

### PROJECT REFERENCE

--

---

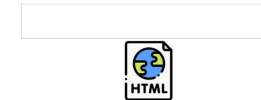
**PROJECT UNDER WHICH THIS FACTSHEET HAS BEEN CREATED**

Rosewood 4.0

**POST DATE**

12 Aug 2021

---



This project has received funding from the European Union's Horizon 2020 research and innovation programme under grant agreement No. 862681

---

**A TOOL FROM ROSEWOOD 4.0, DESIGNED AND DEVELOPED BY**

