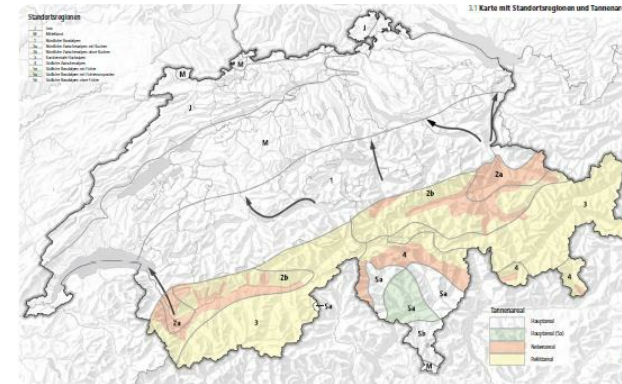


# Sustainability and success control for protecting forest's



A practical tool intended to guarantee the survival of a sustainable and effective protective forest at a minimum cost. Based on the assumption that the state of the forest is crucial to its ability to provide effective protection against natural hazards, silvicultural requirement profiles are described for different forest locations and natural hazards. This method gives an overview for every protection forest type, helps to clarify the management goal and shows the achieved management results. It makes them verifiable and simplifies the discussion in the field of protective forest management for practitioners, authorities and academic staff. Standard method to characterize protection forest's needs and to manage them according to identical objective criteria. The management results are verifiable for the protection forest authorities. This method is used to improve the quality in protection forest management.

## DETAILS

---

### ORIGIN OF WOOD

Forest

### TYPE OF WOOD

Stemwood

### KIND OF WOOD CONCERNED

Stemwood

### IMPACT ON ENVIRONMENT & BIODIVERSITY

Easy

### INCOME EFFECT

Positive

### EXPLOITATION POTENTIAL

--

### HUB

--

### ECONOMIC IMPACT

Positive

### SPECIFIC KNOWLEDGE NEEDED

### MOBILIZATION POTENTIAL

- 10 m<sup>3</sup>/ha

### SUSTAINABILITY POTENTIAL - VALUE

--

### EASE OF IMPLEMENTATION

--

### EASE OF IMPLEMENTATION - EVALUATION

--

### KEY PREREQUISITES

Silvicultural knowledge

### TYPE OF EVENT WHERE THIS BPI HAS BEEN FEATURED

--

### JOB EFFECT

Positive

### COSTS OF IMPLEMENTATION ( EURO - € )

--



## MORE DETAILS

---

### CHALLENGE ADDRESSED

--

### KEYWORDS

--

### COUNTRY OF ORIGIN

Switzerland

### DOMAIN

Forest management, ecosystem, resilience

### DIGITAL SOLUTION

No

### SCALE OF APPLICATION

National

### TYPE OF SOLUTION

--

### INNOVATION

No

### START AND END YEAR

2005 - 2005

## CONTACT DATA

---

### OWNER OR AUTHOR

info@bafu.admin.ch

### REPORTER

## REFERENCES AND RESOURCES

---

### MAIN WEBSITE

<https://www.bafu.admin.ch/bafu/en/home/topics/forest/publications-studies/publications/nachhaltigkeit-und-erfolgskontrolle-im-schutzwald.html>

### PROJECT WEBSITE

--

### PROJECT REFERENCE

--

### RESOURCES

--

---

**PROJECT UNDER WHICH THIS FACTSHEET HAS BEEN CREATED**

Rosewood

**POST DATE**

16 Sep 2019

---



This project has received funding from the European Union's Horizon 2020 research and innovation programme under grant agreement No. 862681

---

**A TOOL FROM ROSEWOOD 4.0, DESIGNED AND DEVELOPED BY**

