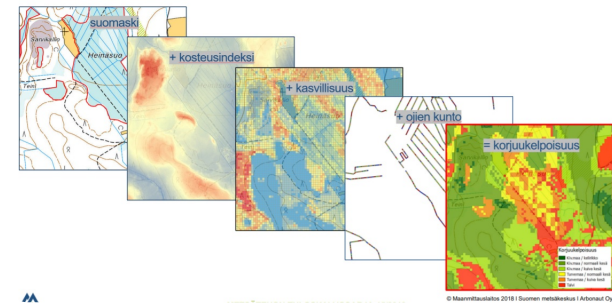


# Harvesting capacity maps



The Best Practice is addressing the challenge of soft terrains in harvesting.

It eases planning of harvesting locations and anticipating of harvesting of different forested areas. It considers only the static features of forest, not daily weather for example. However, bearing capacity in three different summer moisture condition classes is considered in the maps.

The material of the mainland Finland harvesting maps contains rasterized harvesting maps describing the terrain's bearing capacity. The capacity is classified in six categories. The maps tell when it is possible to go into the forest with the harvester. The material is free to use.

## DETAILS

---

### ORIGIN OF WOOD

Forest

### TYPE OF WOOD

Stemwood

### KIND OF WOOD CONCERNED

Stemwood

### IMPACT ON ENVIRONMENT & BIODIVERSITY

Very positive/protects terrain

### INCOME EFFECT

Positive

### EXPLOITATION POTENTIAL

--

### HUB

Northern Hub

### ECONOMIC IMPACT

Medium

### SPECIFIC KNOWLEDGE NEEDED

IT-tool and silvicultural knowledge needed

### MOBILIZATION POTENTIAL

Not possible to assess

### SUSTAINABILITY POTENTIAL - VALUE

Positive

### EASE OF IMPLEMENTATION

Medium

### EASE OF IMPLEMENTATION - EVALUATION

--

### KEY PREREQUISITES

Involving relevant stakeholders

### TYPE OF EVENT WHERE THIS BPI HAS BEEN FEATURED

--

### JOB EFFECT

Positive

### COSTS OF IMPLEMENTATION ( EURO - € )

--

## MORE DETAILS

---

### CHALLENGE ADDRESSED

5.- Enhance economic and environmental performance of forest supply chains

### DOMAIN

Harvesting, infrastructure, logistics

### TYPE OF SOLUTION

Sensors, measurement equipment

### KEYWORDS

--

### DIGITAL SOLUTION

Yes

### INNOVATION

Yes

### COUNTRY OF ORIGIN

Finland

### SCALE OF APPLICATION

National

### START AND END YEAR

--

## CONTACT DATA

---

### OWNER OR AUTHOR

Finnish Forest Centre

Seppo Kilpiäinen

seppo.kilpiainen@metsakeskus.fi

<https://www.metsakeskus.fi/en>

### REPORTER

## REFERENCES AND RESOURCES

---

### MAIN WEBSITE

<https://metsakeskus.maps.arcgis.com/apps/webappviewer>

### PROJECT WEBSITE

[https://www.metsateho.fi/wp-content/uploads/Tuloskalvosarja\\_2019\\_15\\_Korjuukelpoisuuskartat\\_suunnittelun\\_tukena.pdf](https://www.metsateho.fi/wp-content/uploads/Tuloskalvosarja_2019_15_Korjuukelpoisuuskartat_suunnittelun_tukena.pdf)

### PROJECT REFERENCE

--

### RESOURCES

--

---

**PROJECT UNDER WHICH THIS FACTSHEET HAS BEEN CREATED**

Rosewood

**POST DATE**

27 Sep 2019

---



[Link to Rosewood 4.0](#)



This project has received funding from the European Union's Horizon 2020 research and innovation programme under grant agreement No. 862681

---

**A TOOL FROM ROSEWOOD 4.0, DESIGNED AND DEVELOPED BY**

