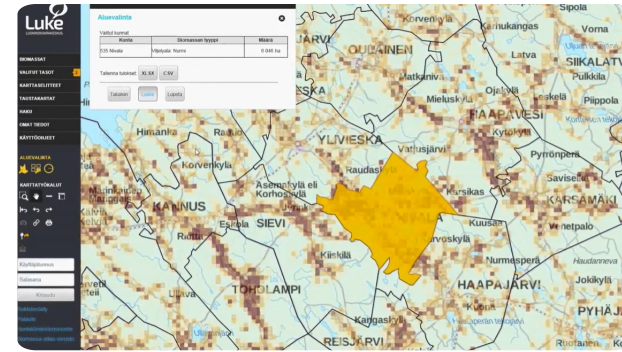


Biomass Atlas | Web-based forest resource map service



Biomass Atlas is an open service which collects the location data of biomasses under one, single user interface. Developed by Luke together with Finnish organizations SYKE, TAPIO, UEF and UVA, and by the funding of the Finnish Ministry of Agriculture and Forestry, the service enables calculations of the amount of biomass in a given geographical area, as well as examining the opportunities and restrictions to utilise the biomass.

The map user interface is easy to use and allows user to watch, analyse and report biomasses from forestry, agriculture and biodegradable wastes from communities and industry. You will find approximately 300 map layers of different biomass types or land use categories in map user interface.

Based on Biomass Atlas, assessments of regional availability of biomass, procurement and logistical costs of biomass, procurement technology and optimization in Luke and other organizations have been successfully accomplished. Analyses of content of biomasses, their nutrients, energy potential, and the nutrient recycling have been optimized regionally using Biomass Atlas.

The potential to utilize biomass regionally can be assessed with focus in employment, regional economy or environmental impact. It is also possible to make scenarios, how these things will develop in the future.

The biomass data is planned to support investment decisions and sustainable use of natural resources, for example, and to help decision-makers to do sustainable energy politics. At the moment Biomass Atlas is available in Finnish. International version of Biomass Atlas will be built in cooperation with Baltic Forbio project, which starts at autumn 2017 and exports the Biomass Atlas concept to Sweden and Baltic sea countries. In Biomass Atlas you will find GIS data and maps of different biomass and land use types:

- multisource national forest inventory data describes biomass that is growing in forests
- forest chip potential
- field and crop areas
- crops and crop side streams
- manure of production animals

- biowaste from communities
- biodegradable waste from companies in scale that requires environmental authorization (VAHTI-database).

Field area, crops and waste data is updated yearly. Manure data is updated when needed, and forest data approximately in every five years. All the data in Biomass Atlas is described also in Finnish metadataportal for geodata, Paikkatietohakemisto.

DETALLES

ORIGEN DE LA MADERA

Bosque

TIPO DE MADERA

Madera en rollo

TIPO DE MADERA AFECTADA

Stemwood; Above and below ground woody biomass

IMPACTO EN EL MEDIO AMBIENTE Y LA BIODIVERSIDAD

Medium

EFFECTO SOBRE LOS INGRESOS

Positive, Atlas can be used in planning processes of different organizations including companies

POTENCIAL DE EXPLOTACIÓN

--

HUB

Eje Norte

IMPACTO ECONÓMICO

Positive, Atlas can be used in planning processes of different organizations including companies

POTENCIAL DE MOVILIZACIÓN

Not possible to assess.

POTENCIAL DE SOSTENIBILIDAD - VALOR

--

FACILIDAD DE APLICACIÓN

Medium, IT skills needed

FACILIDAD DE IMPLEMENTACIÓN - EVALUACIÓN

--

PREREQUISITOS CLAVE

Web pages, see above.

TIPO DE EVENTO EN EL QUE SE HA PRESENTADO ESTA IFS

--

EFFECTO SOBRE EL EMPLEO

Positive, Atlas can be used in planning processes of different organizations including companies

COSTES DE IMPLEMENTACIÓN (EURO - €)

--

CONOCIMIENTOS ESPECÍFICOS NECESARIOS

IT skills

MÁS DETALLES

RETO ABORDADO

5. Mejorar el rendimiento económico y medioambiental de las cadenas de suministro forestal

PALABRAS CLAVE

--

PAÍS DE ORIGEN

Finlandia

DOMINIO

Gestión forestal, silvicultura, servicios ecosistémicos, resiliencia

SOLUCIÓN DIGITAL

Sí

ESCALA DE APLICACIÓN

Nacional

TIPO DE SOLUCIÓN

Plataformas de datos, centros de datos, datos abiertos

INNOVACIÓN

No

AÑO DE INICIO Y FIN

2017 -

DATOS DE CONTACTO

PROPIETARIO O AUTOR

Natural Resources Institute Finland (Luke)

Eeva Lehtonen

eeva.lehtonen@luke.fi

<https://www.luke.fi/en/>

REPORTADOR

REFERENCES AND RESOURCES

SITIO WEB PRINCIPAL

<https://www.luke.fi/biomassa-atlas/en/>

SITIO WEB DEL PROYECTO

--

REFERENCIA DEL PROYECTO

--

RECURSOS

--

LOGO DE LA BUENA PRÁCTICA



LOGOTIPO DE LA ORGANIZACIÓN PRINCIPAL



PROYECTO BAJO EL QUE SE HA CREADO ESTA FICHA

Rosewood

FECHA DE MENSAJE

17 Sep 2019



[Link to Rosewood 4.0](#)



This project has received funding from the European Union's Horizon 2020 research and innovation programme under grant agreement No. 862681

A TOOL FROM ROSEWOOD 4.0, DESIGNED AND DEVELOPED BY

