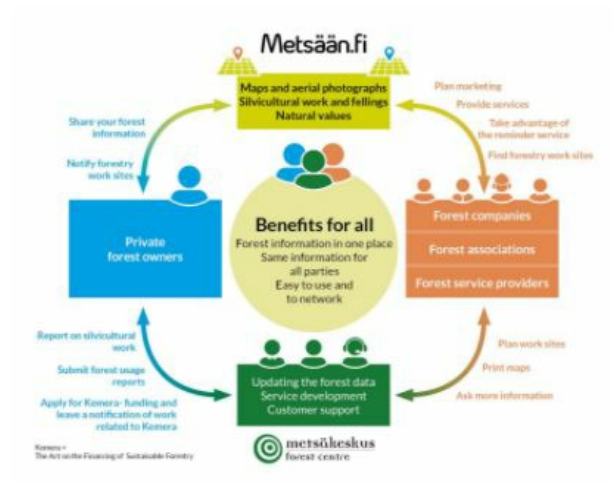


eServices for forest owners and service



Metsään.fi provides eServices for forest owners and forestry service providers. The online application shows the silvicultural possibilities of each forest estate and their compartments.

The Metsään.fi-service included in the Metsään.fi-website is a free e-service for forest owners and corporate actors (companies, associations and service providers) in the forest sector, which aim is to support active decision-making among forest owners by offering forest resource data and maps on forest properties, by making contacts with the authorities easier through online services and to act as a platform for offering forest services, among other things. In addition to the Metsään.fi-service, the website includes open forest data services that offer the users national forest resource data that is not linked with personal information. Metsään.fi is quite easy to use and it provides the forest owner many new flexible services. It is safe system because strong identification is needed. When you log in to

the Metsään.fi service, you will see all the forest holdings you own. You will also see the jointly owned forest holdings where you are a single shareholder. You have one place where you can take care of your forest affairs and plan the management of your forest assets. You will have free access to forest data and a transaction service collected with public funds.

DÉTAILS

ORIGINE DU BOIS

--

TYPE DE BOIS

--

TYPE DE BOIS CONCERNÉ

--

IMPACT SUR L'ENVIRONNEMENT ET LA BIODIVERSITÉ

Very positive, shows the environmental values (habitats of special importance) in the compartments of the forest estate

EFFET SUR LE REVENU

Positive, forest owners sell wood and services providers get income

POTENTIEL D'EXPLOITATION

--

HUB

--

IMPACT ÉCONOMIQUE

Communication between forest owners and forestry service providers

CONNAISSANCES SPÉCIFIQUES REQUISES

POTENTIEL DE MOBILISATION

--

POTENTIEL DE DURABILITÉ - VALEUR

--

FACILITÉ D'IMPLEMENTATION

--

FACILITÉ D'IMPLEMENTATION - ÉVALUATION

Facile

PRÉREQUIS CLÉS

--

TYPE D'ÉVÉNEMENT OÙ CETTE ICPE A ÉTÉ PRÉSENTÉE

--

EFFET SUR L'EMPLOI

Positive, new jobs for service providers

COÛTS D'IMPLEMENTATION (EURO - €)

--

Not any specific knowledge needed

PLUS DE DÉTAILS

DÉFI CONCERNÉ

--

DOMAINE

Inventaire, diagnostic, monitoring
Gestion forestière, sylviculture, services
écosystémiques, résilience

TYPE DE SOLUTION

Conseil, outils de service pour les propriétaires
forestiers

MOTS-CLÉS

virtual tool
3D

SOLUTION DIGITALE

Oui

INNOVATION

Non

PAYS D'ORIGINE

--

ECHELLE D'APPLICATION

Nationale

DÉBUT ET FIN D'ANNÉE

2012 -

INFORMATIONS DE CONTACT

PROPRIÉTAIRE OU AUTEUR

Finnish Forestry Center
Minttu Koponen
minttu.koponen@metsakeskus.fi
<https://www.metsakeskus.fi/en>

RAPPORTEUR

Lapland University of Applied Sciences
Merja Laajanen
merja.laajanen@lapinamk.fi

REFERENCES AND RESOURCES

SITE WEB PRINCIPAL

<https://www.metsakeskus.fi/fi/asiointi/metsaanfi>

RESSOURCES

SITE WEB DU PROJET

--

RÉFÉRENCE DU PROJET

--

PROJET SOUS LEQUEL CETTE FICHE D'INFORMATION A été CRÉÉE

Rosewood 4.0

DATE DE PUBLICATION

12 août 2021



[Link to Rosewood 4.0](#)



This project has received funding from the European Union's Horizon 2020 research and innovation programme under grant agreement No. 862681

A TOOL FROM ROSEWOOD 4.0, DESIGNED AND DEVELOPED BY

