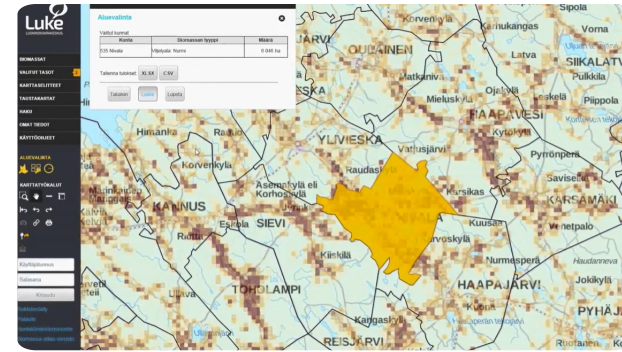


Biomass Atlas | Web-based forest resource map service



Biomass Atlas is an open service which collects the location data of biomasses under one, single user interface. Developed by Luke together with Finnish organizations SYKE, TAPIO, UEF and UVA, and by the funding of the Finnish Ministry of Agriculture and Forestry, the service enables calculations of the amount of biomass in a given geographical area, as well as examining the opportunities and restrictions to utilise the biomass.

The map user interface is easy to use and allows user to watch, analyse and report biomasses from forestry, agriculture and biodegradable wastes from communities and industry. You will find approximately 300 map layers of different biomass types or land use categories in map user interface.

Based on Biomass Atlas, assessments of regional availability of biomass, procurement and logistical costs of biomass, procurement technology and optimization in Luke and other organizations have been successfully accomplished. Analyses of content of biomasses, their nutrients, energy potential, and the nutrient recycling have been optimized regionally using Biomass Atlas.

The potential to utilize biomass regionally can be assessed with focus in employment, regional economy or environmental impact. It is also possible to make scenarios, how these things will develop in the future.

The biomass data is planned to support investment decisions and sustainable use of natural resources, for example, and to help decision-makers to do sustainable energy politics. At the moment Biomass Atlas is available in Finnish. International version of Biomass Atlas will be built in cooperation with Baltic Forbio project, which starts at autumn 2017 and exports the Biomass Atlas concept to Sweden and Baltic sea countries. In Biomass Atlas you will find GIS data and maps of different biomass and land use types:

- multisource national forest inventory data describes biomass that is growing in forests
- forest chip potential
- field and crop areas
- crops and crop side streams
- manure of production animals

- biowaste from communities
- biodegradable waste from companies in scale that requires environmental authorization (VAHTI-database).

Field area, crops and waste data is updated yearly. Manure data is updated when needed, and forest data approximately in every five years. All the data in Biomass Atlas is described also in Finnish metadataportal for geodata, Paikkatietohakemisto.

DÉTAILS

ORIGINE DU BOIS

Forêt

TYPE DE BOIS

Grume

TYPE DE BOIS CONCERNÉ

Stemwood; Above and below ground woody biomass

IMPACT SUR L'ENVIRONNEMENT ET LA BIODIVERSITÉ

Medium

EFFET SUR LE REVENU

Positive, Atlas can be used in planning processes of different organizations including companies

POTENTIEL D'EXPLOITATION

--

HUB

Pôle Nord

IMPACT ÉCONOMIQUE

Positive, Atlas can be used in planning processes of different organizations including companies

POTENTIEL DE MOBILISATION

Not possible to assess.

POTENTIEL DE DURABILITÉ - VALEUR

--

FACILITÉ D'IMPLÉMENTATION

Medium, IT skills needed

FACILITÉ D'IMPLÉMENTATION - ÉVALUATION

--

PRÉREQUIS CLÉS

Web pages, see above.

TYPE D'ÉVÉNEMENT OÙ CETTE ICPE A ÉTÉ PRÉSENTÉE

--

EFFET SUR L'EMPLOI

Positive, Atlas can be used in planning processes of different organizations including companies

COÛTS D'IMPLÉMENTATION (EURO - €)

--

CONNAISSANCES SPÉCIFIQUES REQUISES

IT skills

PLUS DE DÉTAILS

DÉFI CONCERNÉ

5. Accroître les performances économiques et environnementales de la chaîne logistique forestière

DOMAINE

Gestion forestière, sylviculture, services écosystémiques, résilience

TYPE DE SOLUTION

Plateforme de données, hubs de data, open data

MOTS-CLÉS

--

SOLUTION DIGITALE

Oui

INNOVATION

Non

PAYS D'ORIGINE

Finlande

ECHELLE D'APPLICATION

Nationale

DÉBUT ET FIN D'ANNÉE

2017 -

INFORMATIONS DE CONTACT

PROPRIÉTAIRE OU AUTEUR

Natural Resources Institute Finland (Luke)

Eeva Lehtonen

eeva.lehtonen@luke.fi

<https://www.luke.fi/en/>

RAPPORTEUR

REFERENCES AND RESOURCES

SITE WEB PRINCIPAL

<https://www.luke.fi/biomassa-atlas/en/>

RESSOURCES

--

SITE WEB DU PROJET

--

RÉFÉRENCE DU PROJET

--

LOGO DE LA BONNE PRATIQUE



LOGO DE L'ORGANISATION PRINCIPALE

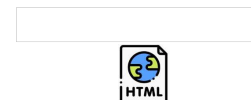


PROJET SOUS LEQUEL CETTE FICHE D'INFORMATION A été CRééE

Rosewood

DATE DE PUBLICATION

17 sep 2019



This project has received funding from the European Union's Horizon 2020 research and innovation programme under grant agreement No. 862681

A TOOL FROM ROSEWOOD 4.0, DESIGNED AND DEVELOPED BY

