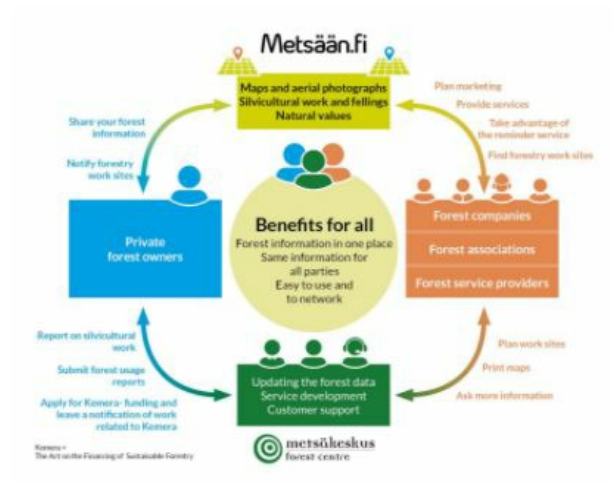


eServices for forest owners and service



Metsään.fi provides eServices for forest owners and forestry service providers. The online application shows the silvicultural possibilities of each forest estate and their compartments.

The Metsään.fi-service included in the Metsään.fi-website is a free e-service for forest owners and corporate actors (companies, associations and service providers) in the forest sector, which aim is to support active decision-making among forest owners by offering forest resource data and maps on forest properties, by making contacts with the authorities easier through online services and to act as a platform for offering forest services, among other things. In addition to the Metsään.fi-service, the website includes open forest data services that offer the users national forest resource data that is not linked with personal information. Metsään.fi is quite easy to use and it provides the forest owner many new flexible services. It is safe system because strong identification is needed. When you log in to

the Metsään.fi service, you will see all the forest holdings you own. You will also see the jointly owned forest holdings where you are a single shareholder. You have one place where you can take care of your forest affairs and plan the management of your forest assets. You will have free access to forest data and a transaction service collected with public funds.

DETALJI

PODRIJETLO DRVA

--

VRSTA DRVA

--

ODGOVARAJUĆA VRSTA DRVA

--

UTJECAJ NA OKOLIŠ I BIORAZNOLIKOST

Very positive, shows the environmental values (habitats of special importance) in the compartments of the forest estate

UČINAK NA PRIHOD

Positive, forest owners sell wood and services providers get income

POTENCIJAL ISKORISTIVOSTI

--

SREDIŠTE

--

GOSPODARSKI UČINAK

Communication between forest owners and forestry service providers

POTREBNA POSEBNA ZNANJA

POTENCIJAL ZA POVEĆANJE UPORABE DRVA

--

POTENCIJAL ODRŽIVOSTI - VRIJEDNOST

--

JEDNOSTAVNOST PROVEDBE

--

JEDNOSTAVNOST PROVEDBE - EVALUACIJA

Lako

KLJUČNI PREDUVJETI

--

VRSTA DOGAĐAJA NA KOJEM JE PRIKAZAN OVAJ BPI

--

UČINAK NA ZAPOŠLJIVOST

Positive, new jobs for service providers

TROŠKOVI PROVEDBE (EURO - €)

--

Not any specific knowledge needed

VIŠE DETALJA

IZAZOV

--

DOMENA

Popis, procjena, praćenje
Upravljanje šumama, uzgoj šuma, usluge
ekosustava, otpornost

VRSTA RJEŠENJA

Savjetodavni i uslužni alati za vlasnike šuma

KLJUČNE RIJEČI

virtual tool

3D

DIGITALNO RJEŠENJE

Da

INOVACIJA

Ne

ZEMLJA PODRIJETLA

--

PODRUČJE PRIMJENE

Nacionalna

POČETAK I KRAJ GODINE

2012 -

KONTAKT PODATCI

VLASNIK ILI AUTOR

Finnish Forestry Center

Minttu Koponen

minttu.koponen@metsakeskus.fi

<https://www.metsakeskus.fi/en>

IZVJESTITELJ

Lapland University of Applied Sciences

Merja Laajanen

merja.laajanen@lapinamk.fi

REFERENCES AND RESOURCES

GLAVNA WEB STRANICA

<https://www.metsakeskus.fi/fi/asiointi/metsaanfi>

WEB STRANICA PROJEKTA

--

REFERENCA PROJEKTA

--

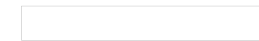
IZVORI

PROJEKT U OKVIRU KOJEG JE INFORMATIVNI LIST KREIRAN

Rosewood 4.0

DATUM UNOSA

12 kol 2021



This project has received funding from the European Union's Horizon 2020 research and innovation programme under grant agreement No.

862681

A TOOL FROM ROSEWOOD 4.0, DESIGNED AND DEVELOPED BY

