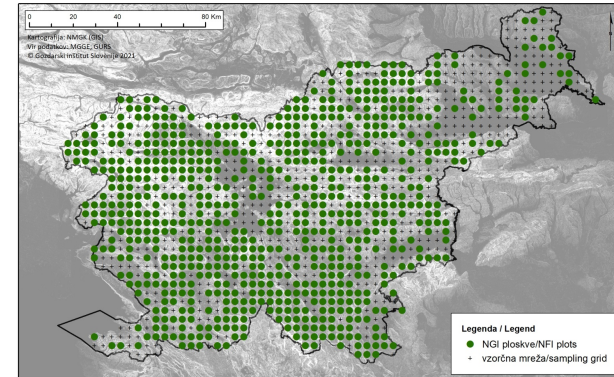


National Forestry Inventory



NFI

Monitoring of state and development of Slovenian forests

Within National Forest Inventory (NFI) forests of Slovenia are monitored and measured. NFI provides extensive and in depth survey of all slovenia forests, including informations about composition, condition, distribution and size of our forests. It is of great importance for monitoring changes of forests through time, for developing suitable policy measures and for further support of sustainable management of forests. The basis for the inventory is a systematic sample of plots on a 4km x 4km grid. The selection of inventory plots is based on the use of lidar and aerial images. With their help, plots that are not located in the forest are eliminated, and they are also helpful in assesment of forests at inaccessible plots. A special data acquisition application was developed for the purpose of field inventory. This guides the enumerator through the inventory process, and at the same time the data is already digitized and ready for further processing. The application is also connected to a GPE device, which allows the precise determination of the sampling point.

DETALJI

PODRIJETLO DRVA

--

VRSTA DRVA

--

ODGOVARAJUĆA VRSTA DRVA

--

UTJECAJ NA OKOLIŠ I BIORAZNOLIKOST

--

UČINAK NA PRIHOD

--

POTENCIJAL ISKORISTIVOSTI

--

SREDIŠTE

Jugoistočno čvorište

GOSPODARSKI UČINAK

--

POTREBNA POSEBNA ZNANJA

--

POTENCIJAL ZA POVEĆANJE UPORABE DRVA

--

POTENCIJAL ODRŽIVOSTI - VRIJEDNOST

--

JEDNOSTAVNOST PROVEDBE

--

JEDNOSTAVNOST PROVEDBE - EVALUACIJA

--

KLJUČNI PREDUVJETI

--

VRSTA DOGAĐAJA NA KOJEM JE PRIKAZAN OVAJ BPI

--

UČINAK NA ZAPOŠLJIVOST

--

TROŠKOVI PROVEDBE (EURO - €)

--

VIŠE DETALJA

IZAZOV

7. Jačanje svijesti javnosti, društvene prihvatljivosti i političke potpore šumarstvu

DOMENA

Upravljanje šumama, uzgoj šuma, usluge ekosustava, otpornost
Nepovoljni prirodni uvjeti, rizici, odgovor na katastrofe

VRSTA RJEŠENJA

Dizajn softvera

KLJUČNE RIJEČI

--

DIGITALNO RJEŠENJE

Da

INOVACIJA

Da

ZEMLJA PODRIJETLA

Slovenija

PODRUČJE PRIMJENE

Nacionalna

POČETAK I KRAJ GODINE

2000 -

KONTAKT PODATCI

VLASNIK ILI AUTOR

Slovenian Forestry Institute

Mitja Skudnik

mitja.skudnik@gozdis.si

<https://www.gozdis.si/oddelek-za-nacrtovanje-in-monitoring-gozdov-in-krajine/>

IZVJESTITELJ

Slovenian Forestry Institute

Polona Hafner

polona.hafner@gozdis.si

REFERENCES AND RESOURCES

GLAVNA WEB STRANICA

https://www.gozdis.si/Nacionalna-gozdna-inventura_1/

WEB STRANICA PROJEKTA

--

REFERENCA PROJEKTA

<https://dirros.openscience.si/lzpisGradiva.php?id=14428&lang=eng>

IZVORI

--

LOGO PRIMJERA DOBRE PRAKSE



LOGO GLAVNE ORGANIZACIJE



PROJEKT U OKVIRU KOJEG JE INFORMATIVNI LIST KREIRAN

Rosewood 4.0

DATUM UNOSA

14 ruj 2021



This project has received funding from the European Union's Horizon 2020 research and innovation programme under grant agreement No. 862681

A TOOL FROM ROSEWOOD 4.0, DESIGNED AND DEVELOPED BY

