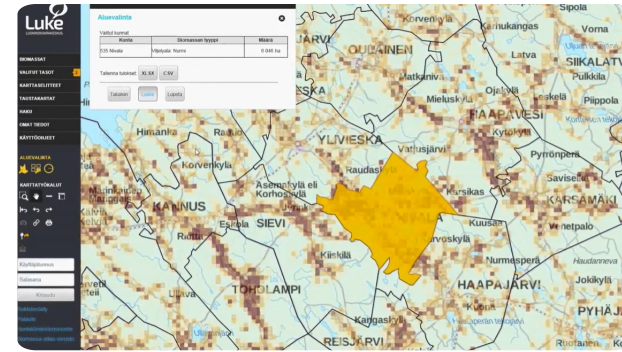


Biomass Atlas | Web-based forest resource map service



Biomass Atlas is an open service which collects the location data of biomasses under one, single user interface. Developed by Luke together with Finnish organizations SYKE, TAPIO, UEF and UVA, and by the funding of the Finnish Ministry of Agriculture and Forestry, the service enables calculations of the amount of biomass in a given geographical area, as well as examining the opportunities and restrictions to utilise the biomass.

The map user interface is easy to use and allows user to watch, analyse and report biomasses from forestry, agriculture and biodegradable wastes from communities and industry. You will find approximately 300 map layers of different biomass types or land use categories in map user interface.

Based on Biomass Atlas, assessments of regional availability of biomass, procurement and logistical costs of biomass, procurement technology and optimization in Luke and other organizations have been successfully accomplished. Analyses of content of biomasses, their nutrients, energy potential, and the nutrient recycling have been optimized regionally using Biomass Atlas.

The potential to utilize biomass regionally can be assessed with focus in employment, regional economy or environmental impact. It is also possible to make scenarios, how these things will develop in the future.

The biomass data is planned to support investment decisions and sustainable use of natural resources, for example, and to help decision-makers to do sustainable energy politics. At the moment Biomass Atlas is available in Finnish. International version of Biomass Atlas will be built in cooperation with Baltic Forbio project, which starts at autumn 2017 and exports the Biomass Atlas concept to Sweden and Baltic sea countries. In Biomass Atlas you will find GIS data and maps of different biomass and land use types:

- multisource national forest inventory data describes biomass that is growing in forests
- forest chip potential
- field and crop areas
- crops and crop side streams
- manure of production animals

- biowaste from communities
- biodegradable waste from companies in scale that requires environmental authorization (VAHTI-database).

Field area, crops and waste data is updated yearly. Manure data is updated when needed, and forest data approximately in every five years. All the data in Biomass Atlas is described also in Finnish metadataportal for geodata, Paikkatietohakemisto.

DETALJI

PODRIJETLO DRVA

Šuma

VRSTA DRVA

Deblo

ODGOVARAJUĆA VRSTA DRVA

Stemwood; Above and below ground woody biomass

UTJECAJ NA OKOLIŠ I BIORAZNOLIKOST

Medium

UČINAK NA PRIHOD

Positive, Atlas can be used in planning processes of different organizations including companies

POTENCIJAL ISKORISTIVOSTI

--

SREDIŠTE

Sjeverno središte

GOSPODARSKI UČINAK

Positive, Atlas can be used in planning processes of different organizations including companies

POTENCIJAL ZA POVEĆANJE UPORABE DRVA

Not possible to assess.

POTENCIJAL ODRŽIVOSTI - VRIJEDNOST

--

JEDNOSTAVNOST PROVEDBE

Medium, IT skills needed

JEDNOSTAVNOST PROVEDBE - EVALUACIJA

--

KLJUČNI PREDUVJETI

Web pages, see above.

VRSTA DOGAĐAJA NA KOJEM JE PRIKAZAN OVAJ BPI

--

UČINAK NA ZAPOŠLJIVOST

Positive, Atlas can be used in planning processes of different organizations including companies

TROŠKOVI PROVEDBE (EURO - €)

--

POTREBNA POSEBNA ZNANJA

IT skills

VIŠE DETALJA

IZAZOV

5. Unaprjeđenje učinkovitosti lanca opskrbe šumom na gospodarstvo i okoliš

DOMENA

Upravljanje šumama, uzgoj šuma, usluge ekosustava, otpornost

VRSTA RJEŠENJA

Podatkovne platforme, centri podataka, javno dostupni podaci Podatkovne platforme, centri podataka, javno dostupni podaci Podatkovne platforme, centri podataka, javno dostupni podaci"

KLJUČNE RIJEČI

--

DIGITALNO RJEŠENJE

Da

INOVACIJA

Ne

ZEMLJA PODRIJETLA

Finska

PODRUČJE PRIMJENE

Nacionalna

POČETAK I KRAJ GODINE

2017 -

KONTAKT PODATCI

VLASNIK ILI AUTOR

Natural Resources Institute Finland (Luke)

Eeva Lehtonen

eeva.lehtonen@luke.fi

<https://www.luke.fi/en/>

IZVJESTITELJ

REFERENCES AND RESOURCES

GLAVNA WEB STRANICA

<https://www.luke.fi/biomassa-atlas/en/>

WEB STRANICA PROJEKTA

--

REFERENCA PROJEKTA

--

IZVORI

--

LOGO PRIMJERA DOBRE PRAKSE



LOGO GLAVNE ORGANIZACIJE

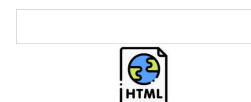


PROJEKT U OKVIRU KOJEG JE INFORMATIVNI LIST KREIRAN

Rosewood

DATUM UNOSA

17 ruj 2019



This project has received funding from the European Union's Horizon 2020 research and innovation programme under grant agreement No. 862681

A TOOL FROM ROSEWOOD 4.0, DESIGNED AND DEVELOPED BY

