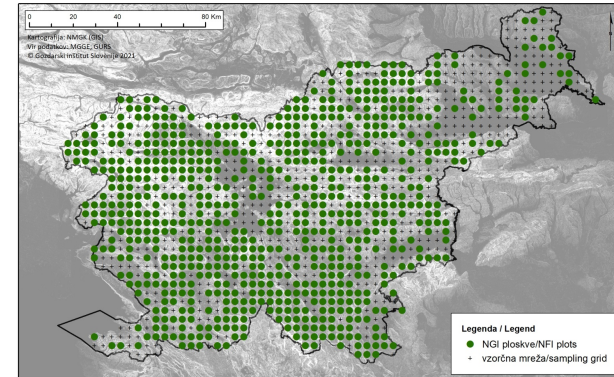


National Forestry Inventory



NFI

Monitoring of state and development of Slovenian forests

Within National Forest Inventory (NFI) forests of Slovenia are monitored and measured. NFI provides extensive and in depth survey of all slovenia forests, including informations about composition, condition, distribution and size of our forests. It is of great importance for monitoring changes of forests through time, for developing suitable policy measures and for further support of sustainable management of forests. The basis for the inventory is a systematic sample of plots on a 4km x 4km grid. The selection of inventory plots is based on the use of lidar and aerial images. With their help, plots that are not located in the forest are eliminated, and they are also helpful in assesment of forests at inaccessible plots. A special data acquisition application was developed for the purpose of field inventory. This guides the enumerator through the inventory process, and at the same time the data is already digitized and ready for further processing. The application is also connected to a GPE device, which allows the precise determination of the sampling point.

DETALJER

OPPRINNELSE FOR TRE

--

TYPE TRE

--

TYPE TRE INVOLVERT

--

PÅVIRKNING PÅ MILJØ OG BIOLOGISK MANGFOLD

--

INNTEKTSEFFEKT

--

UTNYTTELSESPOTENSIAL

--

HUB

Sørøst-knutepunkt

ØKONOMISK PÅVIRKNING

--

SPESIFIKKE KUNNSKAPSBEHOV

--

MOBILISERINGSPOTENSIAL

--

BÆREKRAFTPOTENSIAL - VERDI

--

ENKEL IMPLEMENTERING

--

ENKEL IMPLEMENTERING - EVALUERING

--

VIKTIGE FORUTSETNINGER

--

TYPE BEGIVENHET DER DENNE BPI HAR BLITT OMTALT

--

EFFEKT PÅ ARBEIDSPLASSER

--

KOSTNADER MED IMPLEMENTERING (EURO - €)

--

MER INFORMASJON

UTFORDRING ADRESSERT

7. Øke offentlig bevissthet, sosial aksept og politisk støtte til skogbruket

NØKKELOORD

--

OPPRINELSESLAND

Slovenia

DOMENE

Skogforvaltning, skogskjøtsel, økosystemtjenester
Skogskader, risiko, katastrofeberedskap

DIGITAL LØSNING

Ja

POTENSIALE

Nasjonal

TYPE LØSNING

Mjukvare for design

INNOVASJON

Ja

START OG SLUTT ÅR

2000 -

KONTAKT INFORMASJON

EIER ELLER FORFATTER

Slovenian Forestry Institute

Mitja Skudnik

mitja.skudnik@gozdis.si

<https://www.gozdis.si/oddelek-za-nacrtovanje-in-monitoring-gozdov-in-krajine/>

RAPPORTØR

Slovenian Forestry Institute

Polona Hafner

polona.hafner@gozdis.si

REFERENCES AND RESOURCES

HJEMMESIDE (HOVEDSIDE)

https://www.gozdis.si/Nacionalna-gozdna-inventura_1/

PROSJEKTETS HJEMMESIDE

--

REFERANSE TIL PROSJEKT

<https://dirros.openscience.si/lzpisGradiva.php?id=14428&lang=eng>

RESSURSER

--

LOGO FOR BESTE PRAKSIS



LOGO FOR HOVEDORGANISASJON



PROSJEKT SOM DETTE FAKTAARKET ER OPPRETTET UNDER

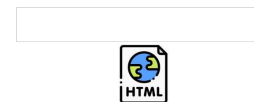
Rosewood 4.0

INNLEGGSDATO

14 sep 2021



This project has received funding from the European Union's Horizon 2020 research and innovation programme under grant agreement No. 862681



A TOOL FROM ROSEWOOD 4.0, DESIGNED AND DEVELOPED BY

