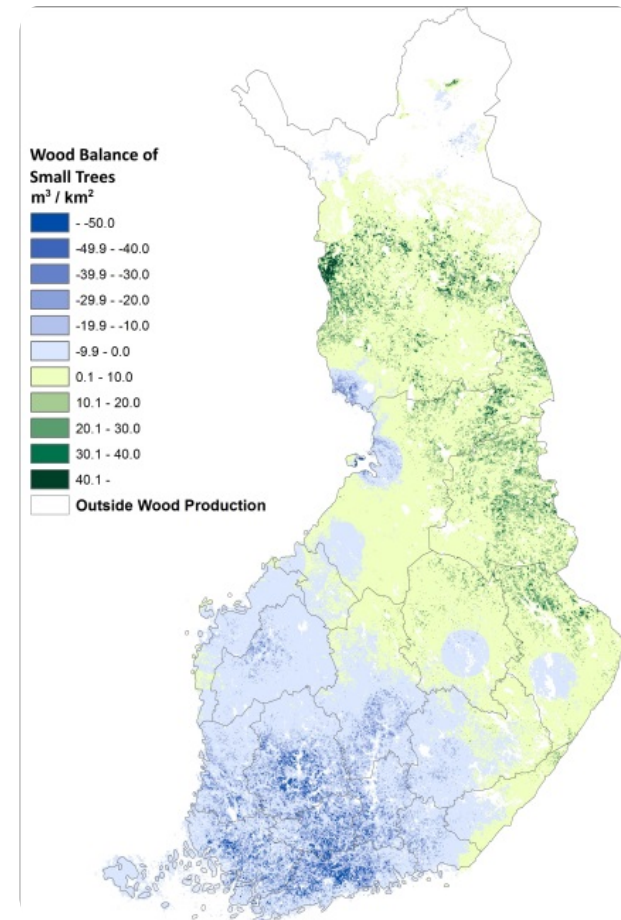


Assessment method for energy wood biomass feedstock availability and transport costs at regional level



Spatially explicit GIS-method and a collection of tools to assess the energy wood biomass availability and transport costs at regional level to any given end-use location. In the process the technical harvesting biomass potential, local competing demand and the wood resource balance are assessed. The transport costs from the grid of supply points can be viewed as a function of transport distance. Also, different future growth and demand scenarios can be included into calculations thus providing a valuable decision support to investors of energy wood industry.

Most customer projects differ from every other project in some respect. Calculation methods need more or less adjustment.

Results from the analysis: 1. Numerical (GIS) maps of biomass potential for any given timber assortment, biomass demand and wood resource balance (e.g. balance of small trees, see picture above).

2. Graphs depicting transport costs as a function of distance. 3. Spreadsheets of the result data used for graphs. 4. Summary report of the results for the customers.

For more information, see the reference.

DETALJER

OPPRINNELSE FOR TRE

Skog

TYPE TRE

Tre fra rundtvirke

TYPE TRE INVOLVERT

Above and below ground woody biomass (ex. shrubs, wood for fibres, wood for energy), Stemwood, Industry

PÅVIRKNING PÅ MILJØ OG BIOLOGISK MANGFOLD

Medium (see above)

INNTEKTSEFFEKT

Not possible to assess.

UTNYTTELSESPOTENSIAL

--

HUB

Northern Hub

ØKONOMISK PÅVIRKNING

Positive, helps the customers to plan their business in a more detailed way

SPESIFIKKE KUNNSKAPSBEHOV

Comprehensive database, coding

MOBILISERINGSPOTENSIAL

Not possible to assess.

BÆREKRAFTPOTENSIAL - VERDI

--

ENKEL IMPLEMENTERING

Easy (the assessment is done by research experts, customers only need to define the basic requirements and calculation area)

ENKEL IMPLEMENTERING - EVALUERING

--

VIKTIGE FORUTSETNINGER

Available on request for the customers in Finland only at the moment.

TYPE BEGIVENHET DER DENNE BPI HAR BLITT OMTALT

--

EFFEKT PÅ ARBEIDSPLASSER

Positive, helps the customers to plan their business in a more detailed way

KOSTNADER MED IMPLEMENTERING (EURO - €)

--

MER INFORMASJON

UTFORDRING ADRESSERT

5. Forbedre den økonomiske og miljømessige ytelsen i skogbrukets forsynings kjede

NØKKEWORD

--

OPPRINELSESLAND

Finland

DOMENE

Skogforvaltning, skogskjøtsel, økosystemtjenester
Avvirkning, infrastruktur, logistikk

DIGITAL LØSNING

Ja

POTENSIALE

Nasjonal

TYPE LØSNING

Modellering, DSS, simulering, optimalisering

INNOVASJON

Ja

START OG SLUTT ÅR

2016 -

KONTAKT INFORMASJON

EIER ELLER FORFATTER

Natural Resources Institute Finland (Luke)

Perttu Anttila

perttu.anttila@luke.fi

<https://www.luke.fi/en/>

RAPPORTØR

Natural Resources Institute Finland (Luke)

Vesa Nivala

vesa.nivala@luke.fi

REFERENCES AND RESOURCES

HJEMMESIDE (HOVEDSIDE)

https://efi.int/sites/default/files/files/events/2018/innovation_workshop-Nivala.pdf

PROSJEKTETS HJEMMESIDE

--

REFERANSE TIL PROSJEKT

--

RESSURSER

--



PROSJEKT SOM DETTE FAKTAARKET ER OPPRETTET UNDER

Rosewood

INNLEGGSDATO

27 sep 2019



This project has received funding from the European Union's Horizon 2020 research and innovation programme under grant agreement No. 862681

A TOOL FROM ROSEWOOD 4.0, DESIGNED AND DEVELOPED BY

