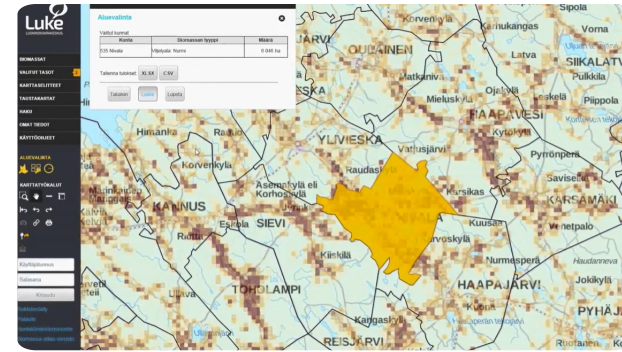


# Biomass Atlas | Web-based forest resource map service



Biomass Atlas is an open service which collects the location data of biomasses under one, single user interface. Developed by Luke together with Finnish organizations SYKE, TAPIO, UEF and UVA, and by the funding of the Finnish Ministry of Agriculture and Forestry, the service enables calculations of the amount of biomass in a given geographical area, as well as examining the opportunities and restrictions to utilise the biomass.

The map user interface is easy to use and allows user to watch, analyse and report biomasses from forestry, agriculture and biodegradable wastes from communities and industry. You will find approximately 300 map layers of different biomass types or land use categories in map user interface.

Based on Biomass Atlas, assessments of regional availability of biomass, procurement and logistical costs of biomass, procurement technology and optimization in Luke and other organizations have been successfully accomplished. Analyses of content of biomasses, their nutrients, energy potential, and the nutrient recycling have been optimized regionally using Biomass Atlas.

The potential to utilize biomass regionally can be assessed with focus in employment, regional economy or environmental impact. It is also possible to make scenarios, how these things will develop in the future.

The biomass data is planned to support investment decisions and sustainable use of natural resources, for example, and to help decision-makers to do sustainable energy politics. At the moment Biomass Atlas is available in Finnish. International version of Biomass Atlas will be built in cooperation with Baltic Forbio project, which starts at autumn 2017 and exports the Biomass Atlas concept to Sweden and Baltic sea countries. In Biomass Atlas you will find GIS data and maps of different biomass and land use types:

- multisource national forest inventory data describes biomass that is growing in forests
- forest chip potential
- field and crop areas
- crops and crop side streams
- manure of production animals

- biowaste from communities
- biodegradable waste from companies in scale that requires environmental authorization (VAHTI-database).

Field area, crops and waste data is updated yearly. Manure data is updated when needed, and forest data approximately in every five years. All the data in Biomass Atlas is described also in Finnish metadataportal for geodata, Paikkatietohakemisto.

## DETALHES

---

### ORIGEM DA MADEIRA

Floresta

### TIPO DE MADEIRA

Tronco

### TIPO DE MADEIRA EM CAUSA

Stemwood; Above and below ground woody biomass

### IMPACTE NO AMBIENTE E BIODIVERSIDADE

Medium

### IMPACTE NAS RECEITAS

Positive, Atlas can be used in planning processes of different organizations including companies

### POTENCIAL DE EXPLORAÇÃO

--

### HUB

Pólo Norte

### IMPACTE ECONOMICO

Positive, Atlas can be used in planning processes of different organizations including companies

### POTENCIAL DE MOBILIZAÇÃO

Not possible to assess.

### SUSTENTABILIDADE POTENCIAL - VALOR

--

### FACILIDADE DE IMPLEMENTAÇÃO

Medium, IT skills needed

### FACILIDADE DE IMPLEMENTAÇÃO

--

### PRE-REQUISITOS CHAVE

Web pages, see above.

### TIPO DE EVENTO EM QUE ESTE BPI TEM SIDO APRESENTADO

--

### IMPACTE NO EMPREGO

Positive, Atlas can be used in planning processes of different organizations including companies

### CUSTOS DE IMPLEMENTAÇÃO (EURO - EUR)

--

## CONHECIMENTOS ESPECIFICOS NECESSÁRIOS

IT skills

## MAIS DETALHES

---

<b>DESAFIO ABORDADO</b>	<b>DOMÍNIO</b>	<b>TIPO DE SOLUÇÃO</b>
5. Melhorar o desempenho económico e ambiental das cadeias de abastecimento florestal	Gestão florestal, silvicultura, serviços do ecossistema, resiliencia	Plataformas de dados, centros de dados, partilha de dados
<b>PALAVRAS-CHAVE</b>	<b>SOLUÇÃO DIGITAL</b>	<b>INOVAÇÃO</b>
--	Sim	Não
<b>PAÍS DE ORIGEM</b>	<b>ESCALA DE APLICAÇÃO</b>	<b>ANO DE INÍCIO E FIM</b>
Finlândia	Nacional	2017 -

## DADOS DE CONTACTO

---

### PROPRIETÁRIO OU AUTOR

Natural Resources Institute Finland (Luke)

Eeva Lehtonen

[eeva.lehtonen@luke.fi](mailto:eeva.lehtonen@luke.fi)

<https://www.luke.fi/en/>

### REPÓRTER

## REFERENCES AND RESOURCES

---

### WEBSITE PRINCIPAL

<https://www.luke.fi/biomassa-atlas/en/>

### WEBSITE DO PROJETO

--

### REFERÊNCIA AO PROJETO

--

### RECURSOS

--

LOGOTIPO DA BOA PRÁTICA

---



LOGOTIPO DA ORGANIZAÇÃO PRINCIPAL

---



---

PROJETO NO ÂMBITO DO QUAL A FOLHA DE DIVULGAÇÃO FOI CRIADA

Rosewood

DATA DE ENTRADA

17 Set 2019

---



This project has received funding from the European Union's Horizon 2020 research and innovation programme under grant agreement No. 862681

---

A TOOL FROM ROSEWOOD 4.0, DESIGNED AND DEVELOPED BY

