

Virtueller Wald | Virtual Forest



Applications like forest inventory and forestry planning, planning of fellings, optimization of harvesting and accounting processes, improvements of timber logistic, evaluation of damaging events etc. are expecting a realistic virtual illustration of the real forest. Within this project the preconditions for building up a single central database – the Virtual Forest - describing the extensive area of North Rhine-Westphalia are constructed. This database contains a mathematical description of biological and technical aspects of the real forest in different detailing (e.g. forest and single-tree consideration) and different precision. Apart from available terrestrial data and a digital site classification, developed by the Landesbetrieb Wald und Holz NRW, the Virtual Forest is based on remote sensing data and information derived thereof. It applies newly developed algorithms on well-known data formats: for single tree identification laser data and aerial images are used, tree species classification uses images and area segmentation is based on raster and vector data. Thus, a comprehensive survey ranging from inventory to forest growth to logistics can be provided. The Virtual Forest provides all stored data in a new 4D geo-data infrastructure while using standardised interfaces. All data (basic data, derived data, technical data, etc.) can also be used by third (programmes, users). Furthermore, a meta-data catalogue answers questions as “Which data of a certain area and/or to a specific subject are placed in which format, which exactness and which actuality at what costs at which place?” Appropriate safety concepts secure the data access as well as the data itself. The consequent consideration of the factor “time” transforms the 2D- or rather 3D- into a 4D-GIS based on a 4D geo-data infrastructure – the basis for a “time machine”. This enables the user to look at the forest at different (historical or future) conditions. The Virtual Forest serves as a foundation for abstracts of different economy units, which are from case to case both business and economically profitable, and with it for the management of larger amounts of wood at lower costs.

MAIS DETALHES

DESAFIO ABORDADO

2. Melhorar as infra-estruturas e a capacidade dos actores públicos

DOMÍNIO

Inventário, avaliação e monitorização
Perturbações florestais, riscos e resposta a catástrofes
Investigação e desenvolvimento

TIPO DE SOLUÇÃO

Modelação, sistemas de apoio à decisão, simulação, optimização

PALAVRAS-CHAVE

--

SOLUÇÃO DIGITAL

Sim

INOVAÇÃO

Sim

PAÍS DE ORIGEM

Alemanha

ESCALA DE APLICAÇÃO

Regional/ sub-nacional

ANO DE INÍCIO E FIM

2001 -

DADOS DE CONTACTO

PROPRIETÁRIO OU AUTOR

RIF Institut für Forschung und Transfer e.V.

contact@rif-ev.de

www.rif-ev.de

REPÓRTER

InnovaWood asbl

Uwe Kies

office@innovawood.com

REFERENCES AND RESOURCES

WEBSITE PRINCIPAL

<http://www.virtueller-wald.de/en/the-virtual-forest/>

WEBSITE DO PROJETO

--

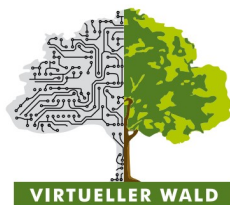
REFERÊNCIA AO PROJETO

--

RECURSOS

RWTH MMI project website / various demo videos

LOGOTIPO DA BOA PRÁTICA



LOGOTIPO DA ORGANIZAÇÃO PRINCIPAL



PROJETO NO ÂMBITO DO QUAL A FOLHA DE DIVULGAÇÃO FOI CRIADA

Rosewood 4.0

DATA DE ENTRADA

18 Nov 2019



Link to Rosewood 4.0



This project has received funding from the European Union's Horizon 2020 research and innovation programme under grant agreement No. 862681

A TOOL FROM ROSEWOOD 4.0, DESIGNED AND DEVELOPED BY

