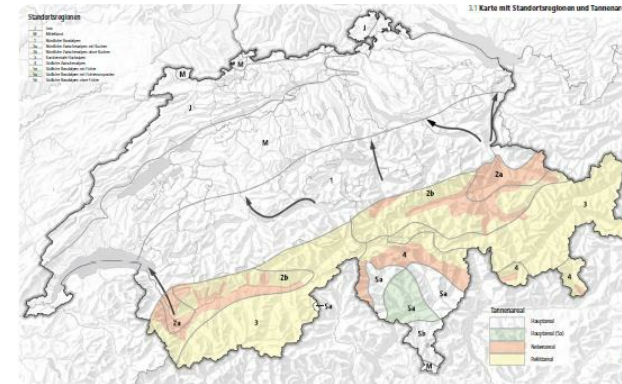


# Sustainability and success control for protecting forest's



A practical tool intended to guarantee the survival of a sustainable and effective protective forest at a minimum cost. Based on the assumption that the state of the forest is crucial to its ability to provide effective protection against natural hazards, silvicultural requirement profiles are described for different forest locations and natural hazards. This method gives an overview for every protection forest type, helps to clarify the management goal and shows the achieved management results. It makes them verifiable and simplifies the discussion in the field of protective forest management for practitioners, authorities and academic staff. Standard method to characterize protection forest's needs and to manage them according to identical objective criteria. The management results are verifiable for the protection forest authorities. This method is used to improve the quality in protection forest management.

## DETALII

---

### SURSA DE LEMN

Pădure

### TIPUL DE LEMN

Lemn masiv

### TIPUL DE LEMN ÎN CAUZĂ

Stemwood

### IMPACTUL ASUPRA MEDIULUI ȘI BIODIVERSITĂȚII

Easy

### EFACT ASUPRA VENITURILOR

Positive

### POTENȚIAL DE EXPLOATARE

--

### HUB

--

### IMPACT ECONOMIC

Positive

### CUNOȘTINȚE SPECIFICE NECESARE

### POTENȚIALUL DE MOBILIZARE

- 10 m<sup>3</sup>/ha

### POTENȚIAL DE SUSTENABILITATE - VALOARE

--

### FACILITATEA DE IMPLEMENTARE

--

### FACILITATEA DE IMPLEMENTARE - EVALUARE

--

### CONDIȚII CHEIE PRELABILE

Silvicultural knowledge

### TIPUL DE EVENIMENT LA CARE A FOST PREZENTAT ACEST IPB

--

### EFACT ASUPRA LOCURILOR DE MUNCĂ

Positive

### COSTURI PENTRU IMPLEMENTARE (EURO - €)

--



**MAI MULTE  
DETALII**

---

**PROVOCARE ABORDATĂ**

--

**DOMAIN**

Managementul pădurilor, silvicultura, servicii  
ecosistemice, reziliență

**TIP DE SOLUȚIE**

--

**CUVINTE CHEIE**

--

**SOLUȚIE DIGITALĂ**

Nu

**INOVAȚIE**

Nu

**ȚARA DE ORIGINE**

Elveția

**SCARA DE APLICARE**

Național

**ANUL DE ÎNCEPUT ȘI DE SFÂRȘIT**

2005 - 2005

**DATE DE  
CONTACT**

---

**PROPRIETAR SAU AUTOR**

**REPORTER**

info@bafu.admin.ch

**REFERENCES  
AND RESOURCES**

---

**PAGINĂ WEB**

<https://www.bafu.admin.ch/bafu/en/home/topics/forest/publications-studies/publications/nachhaltigkeit-und-erfolgskontrolle-im-schutzwald.html>

**RESURSE**

--

**WEBSITE PROJECT**

--

**REFERINȚĂ PROIECT**

--

---

PROIECTUL ÎN CADRUL CĂRUIA A FOST CREATĂ ACEASTĂ FIȘĂ INFORMATIVĂ

Rosewood

DATA POSTĂRII

16 Sep 2019

---



This project has received funding from the European Union's Horizon 2020 research and innovation programme under grant agreement No.

862681

---

A TOOL FROM ROSEWOOD 4.0, DESIGNED AND DEVELOPED BY

