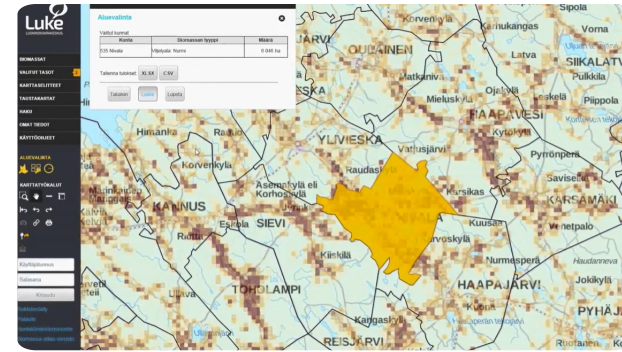


# Biomass Atlas | Web-based forest resource map service



Biomass Atlas is an open service which collects the location data of biomasses under one, single user interface. Developed by Luke together with Finnish organizations SYKE, TAPIO, UEF and UVA, and by the funding of the Finnish Ministry of Agriculture and Forestry, the service enables calculations of the amount of biomass in a given geographical area, as well as examining the opportunities and restrictions to utilise the biomass.

The map user interface is easy to use and allows user to watch, analyse and report biomasses from forestry, agriculture and biodegradable wastes from communities and industry. You will find approximately 300 map layers of different biomass types or land use categories in map user interface.

Based on Biomass Atlas, assessments of regional availability of biomass, procurement and logistical costs of biomass, procurement technology and optimization in Luke and other organizations have been successfully accomplished. Analyses of content of biomasses, their nutrients, energy potential, and the nutrient recycling have been optimized regionally using Biomass Atlas.

The potential to utilize biomass regionally can be assessed with focus in employment, regional economy or environmental impact. It is also possible to make scenarios, how these things will develop in the future.

The biomass data is planned to support investment decisions and sustainable use of natural resources, for example, and to help decision-makers to do sustainable energy politics. At the moment Biomass Atlas is available in Finnish. International version of Biomass Atlas will be built in cooperation with Baltic Forbio project, which starts at autumn 2017 and exports the Biomass Atlas concept to Sweden and Baltic sea countries. In Biomass Atlas you will find GIS data and maps of different biomass and land use types:

- multisource national forest inventory data describes biomass that is growing in forests
- forest chip potential
- field and crop areas
- crops and crop side streams
- manure of production animals

- biowaste from communities
- biodegradable waste from companies in scale that requires environmental authorization (VAHTI-database).

Field area, crops and waste data is updated yearly. Manure data is updated when needed, and forest data approximately in every five years. All the data in Biomass Atlas is described also in Finnish metadataportal for geodata, Paikkatietohakemisto.

## DETALII

---

### SURSA DE LEMN

Pădure

### TIPUL DE LEMN

Lemn masiv

### TIPUL DE LEMN ÎN CAUZĂ

Stemwood; Above and below ground woody biomass

### IMPACTUL ASUPRA MEDIULUI ȘI BIODIVERSITĂȚII

Medium

### EFACT ASUPRA VENITURILOR

Positive, Atlas can be used in planning processes of different organizations including companies

### POTENȚIAL DE EXPLOATARE

--

### HUB

Hub-ul de Nord

### IMPACT ECONOMIC

Positive, Atlas can be used in planning processes of different organizations including companies

### POTENȚIALUL DE MOBILIZARE

Not possible to assess.

### POTENȚIAL DE SUSTENABILITATE - VALOARE

--

### FACILITATEA DE IMPLEMENTARE

Medium, IT skills needed

### FACILITATEA DE IMPLEMENTARE - EVALUARE

--

### CONDIȚII CHEIE PRELABILE

Web pages, see above.

### TIPUL DE EVENIMENT LA CARE A FOST PREZENTAT ACEST IPB

--

### EFACT ASUPRA LOCURILOR DE MUNCĂ

Positive, Atlas can be used in planning processes of different organizations including companies

### COSTURI PENTRU IMPLEMENTARE (EURO - €)

--

CUNOȘTINȚE SPECIFICE NECESARE

IT skills

## MAI MULTE DETALII

---

### PROVOCARE ABORDATĂ

5. Îmbunătățirea performanțelor economice și de mediu ale lanțurilor de aprovizionare cu păduri

### CUVINTE CHEIE

--

### ȚARA DE ORIGINE

Finlanda

### DOMAIN

Managementul pădurilor, silvicultura, servicii ecosistemice, reziliență

### SOLUȚIE DIGITALĂ

Da

### SCARA DE APLICARE

Național

### TIP DE SOLUȚIE

Platforme de date, hub-uri de date, date deschise

### INOVAȚIE

Nu

### ANUL DE ÎNCEPUT ȘI DE SFÂRȘIT

2017 -

## DATE DE CONTACT

---

### PROPRIETAR SAU AUTOR

Natural Resources Institute Finland (Luke)

Eeva Lehtonen

[eeva.lehtonen@luke.fi](mailto:eeva.lehtonen@luke.fi)

<https://www.luke.fi/en/>

### REPORTER

## REFERENCES AND RESOURCES

---

### PAGINĂ WEB

<https://www.luke.fi/biomassa-atlas/en/>

### WEBSITE PROJECT

--

### REFERINȚĂ PROIECT

--

### RESURSE

--



PROIECTUL ÎN CADRUL CĂRUI A FOST CREATă ACEASTă FIȘă INFORMATIVă

Rosewood

DATA POSTĂRII

17 Sep 2019



[Link to Rosewood 4.0](#)



This project has received funding from the European Union's Horizon 2020 research and innovation programme under grant agreement No. 862681

A TOOL FROM ROSEWOOD 4.0, DESIGNED AND DEVELOPED BY

