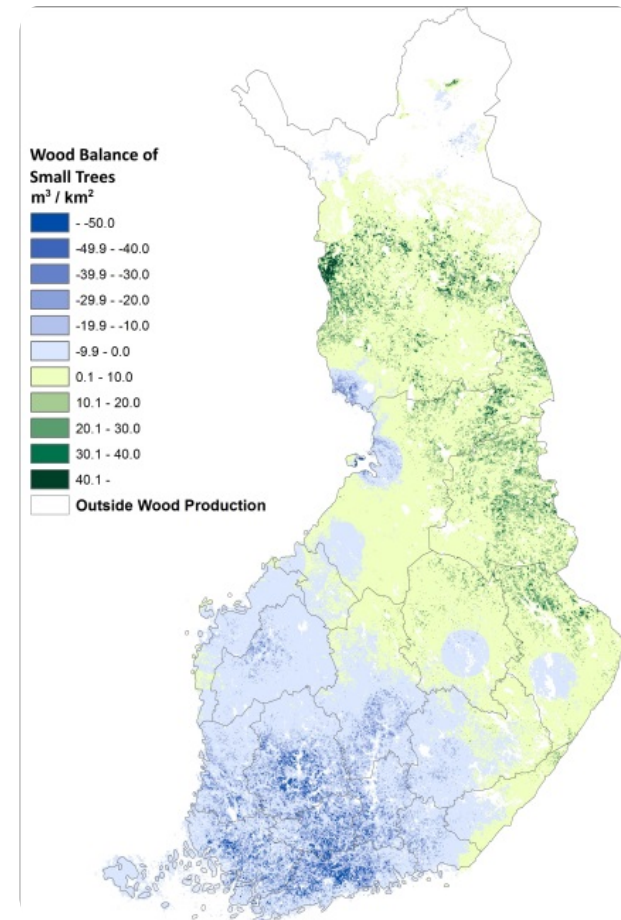


Assessment method for energy wood biomass feedstock availability and transport costs at regional level



Spatially explicit GIS-method and a collection of tools to assess the energy wood biomass availability and transport costs at regional level to any given end-use location. In the process the technical harvesting biomass potential, local competing demand and the wood resource balance are assessed. The transport costs from the grid of supply points can be viewed as a function of transport distance. Also, different future growth and demand scenarios can be included into calculations thus providing a valuable decision support to investors of energy wood industry.

Most customer projects differ from every other project in some respect. Calculation methods need more or less adjustment.

Results from the analysis: 1. Numerical (GIS) maps of biomass potential for any given timber assortment, biomass demand and wood resource balance (e.g. balance of small trees, see picture above).

2. Graphs depicting transport costs as a function of distance. 3. Spreadsheets of the result data used for graphs. 4. Summary report of the results for the customers.

For more information, see the reference.

DETALII

SURSA DE LEMN

Pădure

TIPUL DE LEMN

Lemn masiv

TIPUL DE LEMN ÎN CAUZĂ

Above and below ground woody biomass (ex. shrubs, wood for fibres, wood for energy), Stemwood, Industry

IMPACTUL ASUPRA MEDIULUI ȘI BIODIVERSITĂȚII

Medium (see above)

EFFECT ASUPRA VENITURILOR

Not possible to assess.

POTENȚIAL DE EXPLOATARE

--

HUB

Hub-ul de Nord

IMPACT ECONOMIC

Positive, helps the customers to plan their business in a more detailed way

CUNOȘȚINȚE SPECIFICE NECESARE

Comprehensive database, coding

POTENȚIALUL DE MOBILIZARE

Not possible to assess.

POTENȚIAL DE SUSTENABILITATE - VALOARE

--

FACILITATEA DE IMPLEMENTARE

Easy (the assessment is done by research experts, customers only need to define the basic requirements and calculation area)

FACILITATEA DE IMPLEMENTARE - EVALUARE

--

CONDIȚII CHEIE PRELABILE

Available on request for the customers in Finland only at the moment.

TIPUL DE EVENIMENT LA CARE A FOST PREZENTAT ACEST IPB

--

EFFECT ASUPRA LOCURILOR DE MUNCĂ

Positive, helps the customers to plan their business in a more detailed way

COSTURI PENTRU IMPLEMENTARE (EURO - €)

--

MAI MULTE DETALII

PROVOCARE ABORDATĂ

5. Îmbunătățirea performanțelor economice și de mediu ale lanțurilor de aprovizionare cu păduri

DOMAIN

Managementul pădurilor, silvicultura, servicii ecosistemice, reziliență
Recoltare, infrastructură, logistică

TIP DE SOLUȚIE

Modelare, DSS, simulare, optimizare

CUVINTE CHEIE

--

SOLUȚIE DIGITALĂ

Da

INOVAȚIE

Da

ȚARA DE ORIGINE

Finlanda

SCARA DE APLICARE

Național

ANUL DE ÎNCEPUT ȘI DE SFÂRȘIT

2016 -

DATE DE CONTACT

PROPRIETAR SAU AUTOR

Natural Resources Institute Finland (Luke)

Perttu Anttila

perttu.anttila@luke.fi

<https://www.luke.fi/en/>

REPORTER

Natural Resources Institute Finland (Luke)

Vesa Nivala

vesa.nivala@luke.fi

REFERENCES AND RESOURCES

PAGINĂ WEB

https://efi.int/sites/default/files/files/events/2018/innovation_workshop-Nivala.pdf

RESURSE

--

WEBSITE PROJECT

--

REFERINȚĂ PROIECT

--



PROIECTUL ÎN CADRUL CĂRUIA A FOST CREATă ACEASTă FIȘă INFORMATIVă

Rosewood

DATA POSTĂRII

27 Sep 2019



This project has received funding from the European Union's Horizon
2020 research and innovation programme under grant agreement No.
862681

A TOOL FROM ROSEWOOD 4.0, DESIGNED AND DEVELOPED BY

