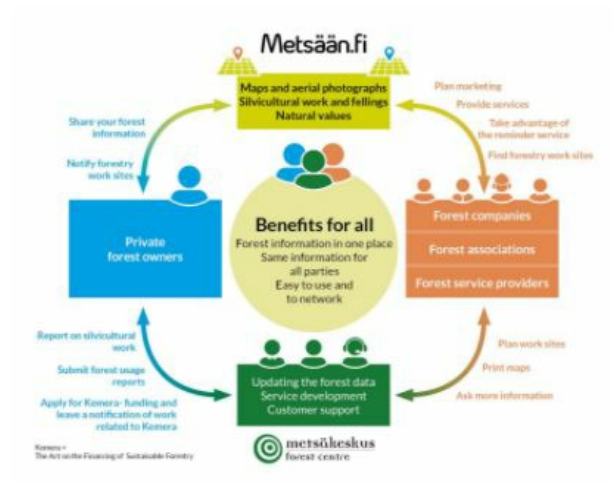


# eServices for forest owners and service



*Metsään.fi provides eServices for forest owners and forestry service providers. The online application shows the silvicultural possibilities of each forest estate and their compartments.*

The Metsään.fi-service included in the Metsään.fi-website is a free e-service for forest owners and corporate actors (companies, associations and service providers) in the forest sector, which aim is to support active decision-making among forest owners by offering forest resource data and maps on forest properties, by making contacts with the authorities easier through online services and to act as a platform for offering forest services, among other things. In addition to the Metsään.fi-service, the website includes open forest data services that offer the users national forest resource data that is not linked with personal information. Metsään.fi is quite easy to use and it provides the forest owner many new flexible services. It is safe system because strong identification is needed. When you log in to

the Metsään.fi service, you will see all the forest holdings you own. You will also see the jointly owned forest holdings where you are a single shareholder. You have one place where you can take care of your forest affairs and plan the management of your forest assets. You will have free access to forest data and a transaction service collected with public funds.

## PODROBNOSTI

---

### PÔVOD DREVA

--

### DRUH DREVA

--

### UVAŽOVANÝ DRUH DREVA

--

### VPLYV NA ŽIVOTNÉ PROSTREDIE A BIODIVERZITU

Very positive, shows the environmental values (habitats of special importance) in the compartments of the forest estate

### DOPAD NA PRÍJMY

Positive, forest owners sell wood and services providers get income

### POTENCIÁL VYUŽITIA

--

### ROZBOČOVAČ

--

### EKONOMICKÝ VPLYV

Communication between forest owners and forestry service providers

### POTREBA ŠPECIFICKÝCH ZNALOSTÍ

### MOBILIZAČNÝ POTENCIÁL

--

### POTENCIÁL UDRŽATEĽNOSTI - HODNOTA

--

### UĽAHČENIE IMPLMENTÁCIE

--

### UĽAHČENIE IMPLMENTÁCIE - HODNOTENIE

Easy

### Kľúčové PREPOKLADY

--

### TYP PODUJATIA, NA KTOROM BOL TENTO BPI PREZENTOVANÝ

--

### DOPAD NA ZAMESTNANOSŤ

Positive, new jobs for service providers

### NÁKLADY NA IMPLEMENTÁCIU (EURO - €)

--

Not any specific knowledge needed

**VIAC  
INFORMÁCIÍ**

---

**RIEŠENÁ VÝZVA**

--

**DOMAIN**

Inventarizácia, posudzovanie,  
monitoring/monitorovanie

Lesné hospodárstvo/hospodárska úprava lesa,  
pestovanie lesa, ekosystémové služby, odolnosť

**TYP RIEŠENIA**

Poradenské a servisné nástroje pre vlastníkov lesov

**Kľúčové SLOVÁ**

virtual tool

3D

**DIGITALNE RIEŠENIE**

áno

**INOVÁCIE**

Nie

**KRAJINA PôVODU**

--

**ROZSAH APLIKÁCIE**

Národný

**ZAČIATOK A KONIEC ROKA**

2012 -

**KONTAKTNÉ  
ÚDAJE**

---

**VLASTNÍK ALEBO AUTOR**

Finnish Forestry Center

Minttu Koponen

minttu.koponen@metsakeskus.fi

<https://www.metsakeskus.fi/en>

**REPORTÉR**

Lapland University of Applied Sciences

Merja Laajanen

merja.laajanen@lapinamk.fi

**REFERENCES  
AND RESOURCES**

---

**HLAVNÁ WEBSTRÁNKA**

<https://www.metsakeskus.fi/fi/asiointi/metsaanfi>

**PROJEKTOVÁ WEBSTRÁNKA**

--

**REFERENCIA PROJEKTU**

--

**ZDROJE**

---

PROJEKT, V RÁMCI KTORÉHO BOL TENTO INFORMAČNÝ PREHĽAD VYTVORENÝ  
Rosewood 4.0

DÁTUM ODOSLANIA  
12 aug 2021

---



This project has received funding from the European Union's Horizon  
2020 research and innovation programme under grant agreement No.  
862681

---

A TOOL FROM ROSEWOOD 4.0, DESIGNED AND DEVELOPED BY

