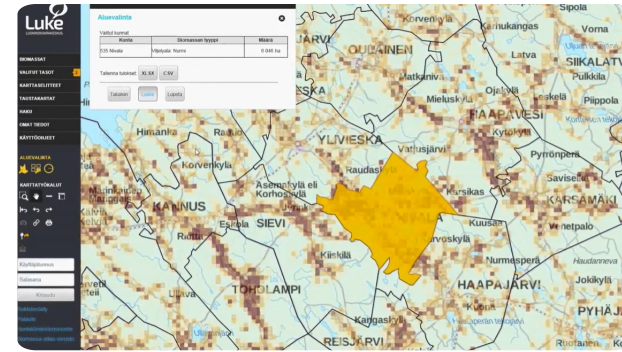


Biomass Atlas | Web-based forest resource map service



Biomass Atlas is an open service which collects the location data of biomasses under one, single user interface. Developed by Luke together with Finnish organizations SYKE, TAPIO, UEF and UVA, and by the funding of the Finnish Ministry of Agriculture and Forestry, the service enables calculations of the amount of biomass in a given geographical area, as well as examining the opportunities and restrictions to utilise the biomass.

The map user interface is easy to use and allows user to watch, analyse and report biomasses from forestry, agriculture and biodegradable wastes from communities and industry. You will find approximately 300 map layers of different biomass types or land use categories in map user interface.

Based on Biomass Atlas, assessments of regional availability of biomass, procurement and logistical costs of biomass, procurement technology and optimization in Luke and other organizations have been successfully accomplished. Analyses of content of biomasses, their nutrients, energy potential, and the nutrient recycling have been optimized regionally using Biomass Atlas.

The potential to utilize biomass regionally can be assessed with focus in employment, regional economy or environmental impact. It is also possible to make scenarios, how these things will develop in the future.

The biomass data is planned to support investment decisions and sustainable use of natural resources, for example, and to help decision-makers to do sustainable energy politics. At the moment Biomass Atlas is available in Finnish. International version of Biomass Atlas will be built in cooperation with Baltic Forbio project, which starts at autumn 2017 and exports the Biomass Atlas concept to Sweden and Baltic sea countries. In Biomass Atlas you will find GIS data and maps of different biomass and land use types:

- multisource national forest inventory data describes biomass that is growing in forests
- forest chip potential
- field and crop areas
- crops and crop side streams
- manure of production animals

- biowaste from communities
- biodegradable waste from companies in scale that requires environmental authorization (VAHTI-database).

Field area, crops and waste data is updated yearly. Manure data is updated when needed, and forest data approximately in every five years. All the data in Biomass Atlas is described also in Finnish metadataportal for geodata, Paikkatietohakemisto.

PODROBNOSTI

PÔVOD DREVA

Les

DRUH DREVA

Kmeňové drevo

UVAŽOVANÝ DRUH DREVA

Stemwood; Above and below ground woody biomass

VPLYV NA ŽIVOTNÉ PROSTREDIE A BIODIVERZITU

Medium

DOPAD NA PRÍJMY

Positive, Atlas can be used in planning processes of different organizations including companies

POTENCIÁL VYUŽITIA

--

ROZBOČOVAČ

Severný uzol

EKONOMICKÝ VPLYV

Positive, Atlas can be used in planning processes of different organizations including companies

MOBILZAČNÝ POTENCIÁL

Not possible to assess.

POTENCIÁL UDRŽATEĽNOSTI - HODNOTA

--

UĽAHČENIE IMPLMENTÁCIE

Medium, IT skills needed

UĽAHČENIE IMPLMENTÁCIE - HODNOTENIE

--

Kľúčové PREPOKLADY

Web pages, see above.

TYP PODUJATIA, NA KTOROM BOL TENTO BPI PREZENTOVANÝ

--

DOPAD NA ZAMESTNANOSŤ

Positive, Atlas can be used in planning processes of different organizations including companies

NÁKLADY NA IMPLEMENTÁCIU (EURO - €)

--

POTREBA ŠPECIFICKÝCH ZNALOSTÍ

IT skills

VIAC INFORMÁCIÍ

RIEŠENÁ VÝZVA

5. Zlepšenie hospodárskej a environmentálnej výkonnosti dodávateľských reťazcov v lesníctve

Kľúčové SLOVÁ

--

KRAJINA PôVODU

Fínsko

DOMAIN

Lesné hospodárstvo/hospodárska úprava lesa, pestovanie lesa, ekosystémové služby, odolnosť

DIGITALNE RIEŠENIE

áno

ROZSAH APLIKÁCIE

Národný

TYP RIEŠENIA

Dátové platformy, dátové rozbočovače, verejne prístupné dáta

INOVÁCIE

Nie

ZAČIATOK A KONIEC ROKA

2017 -

KONTAKTNÉ ÚDAJE

VLASTNÍK ALEBO AUTOR

Natural Resources Institute Finland (Luke)

Eeva Lehtonen

eeva.lehtonen@luke.fi

<https://www.luke.fi/en/>

REPORTÉR

REFERENCES AND RESOURCES

HLAVNÁ WEBSTRÁNKA

<https://www.luke.fi/biomassa-atlas/en/>

PROJEKTOVÁ WEBSTRÁNKA

--

REFERENCIA PROJEKTU

--

ZDROJE

--

LOGO NAJLPEŠEJ PRAXE



LOGO HLAVNEJ ORGANIZÁCIE

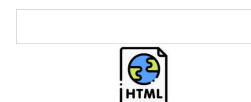


PROJEKT, V RÁMCI KTORÉHO BOL TENTO INFORMAČNÝ PREHÍAD VYTVORENÝ

Rosewood

DÁTUM ODOSLANIA

17 sep 2019



This project has received funding from the European Union's Horizon 2020 research and innovation programme under grant agreement No. 862681

A TOOL FROM ROSEWOOD 4.0, DESIGNED AND DEVELOPED BY

