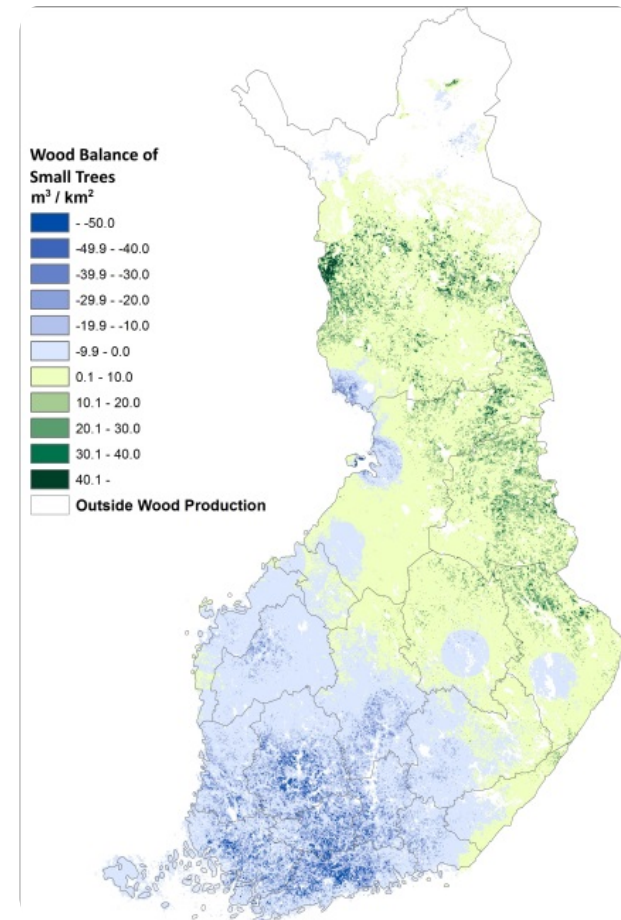


## Assessment method for energy wood biomass feedstock availability and transport costs at regional level



Spatially explicit GIS-method and a collection of tools to assess the energy wood biomass availability and transport costs at regional level to any given end-use location. In the process the technical harvesting biomass potential, local competing demand and the wood resource balance are assessed. The transport costs from the grid of supply points can be viewed as a function of transport distance. Also, different future growth and demand scenarios can be included into calculations thus providing a valuable decision support to investors of energy wood industry.

Most customer projects differ from every other project in some respect. Calculation methods need more or less adjustment.

Results from the analysis: 1. Numerical (GIS) maps of biomass potential for any given timber assortment, biomass demand and wood resource balance (e.g. balance of small trees, see picture above).

2. Graphs depicting transport costs as a function of distance. 3. Spreadsheets of the result data used for graphs. 4. Summary report of the results for the customers.

For more information, see the reference.

## PODROBNOSTI

---

### PÔVOD DREVA

Les

### DRUH DREVA

Kmeňové drevo

### UVAŽOVANÝ DRUH DREVA

Above and below ground woody biomass (ex. shrubs, wood for fibres, wood for energy), Stemwood, Industry

### VPLYV NA ŽIVOTNÉ PROSTREDIE A BIODIVERZITU

Medium (see above)

### DOPAD NA PRÍJMY

Not possible to assess.

### POTENCIÁL VYUŽITIA

--

### ROZBOČOVAČ

Severný uzol

### EKONOMICKÝ VPLYV

Positive, helps the customers to plan their business in a more detailed way

### POTREBA ŠPECIFICKÝCH ZNALOSTÍ

Comprehensive database, coding

### MOBILIZAČNÝ POTENCIÁL

Not possible to assess.

### POTENCIÁL UDRŽATEĽNOSTI - HODNOTA

--

### UĽAHČENIE IMPLMENTÁCIE

Easy (the assessment is done by research experts, customers only need to define the basic requirements and calculation area)

### UĽAHČENIE IMPLMENTÁCIE - HODNOTENIE

--

### Kľúčové PREPOKLADY

Available on request for the customers in Finland only at the moment.

### TYP PODUJATIA, NA KTOROM BOL TENTO BPI PREZENTOVANÝ

--

### DOPAD NA ZAMESTNANOSŤ

Positive, helps the customers to plan their business in a more detailed way

### NÁKLADY NA IMPLEMENTÁCIU (EURO - €)

--

## VIAC INFORMÁCIÍ

---

### RIEŠENÁ VÝZVA

5. Zlepšenie hospodárskej a environmentálnej výkonnosti dodávateľských reťazcov v lesníctve

### Kľúčové SLOVá

--

### KRAJINA PôVODU

Fínsko

### DOMAIN

Lesné hospodárstvo/hospodárska úprava lesa, pestovanie lesa, ekosystémové služby, odolnosť  
Ťažba, infraštruktúra, logistika

### DIGITALNE RIEŠENIE

áno

### ROZSAH APLIKÁCIE

Národný

### TYP RIEŠENIA

Modelovanie, simulácia, optimalizácia

### INOVÁCIE

Áno

### ZAČIATOK A KONIEC ROKA

2016 -

## KONTAKTNÉ ÚDAJE

---

### VLASTNÍK ALEBO AUTOR

Natural Resources Institute Finland (Luke)

Perttu Anttila

[perttu.anttila@luke.fi](mailto:perttu.anttila@luke.fi)

<https://www.luke.fi/en/>

### REPORTÉR

Natural Resources Institute Finland (Luke)

Vesa Nivala

[vesa.nivala@luke.fi](mailto:vesa.nivala@luke.fi)

## REFERENCES AND RESOURCES

---

### HLAVNá WEBSTRáNKA

[https://efi.int/sites/default/files/files/events/2018/innovation\\_workshop-Nivala.pdf](https://efi.int/sites/default/files/files/events/2018/innovation_workshop-Nivala.pdf)

### PROJEKTOVá WEBSTRáNKA

--

### REFERENCIA PROJEKTU

--

### ZDROJE

--



---

PROJEKT, V RÁMCI KTORÉHO BOL TENTO INFORMAČNÝ PREHĽAD VYTVORENÝ

Rosewood

DÁTUM ODOSLANIA

27 sep 2019

---



This project has received funding from the European Union's Horizon 2020 research and innovation programme under grant agreement No. 862681

---

A TOOL FROM ROSEWOOD 4.0, DESIGNED AND DEVELOPED BY

