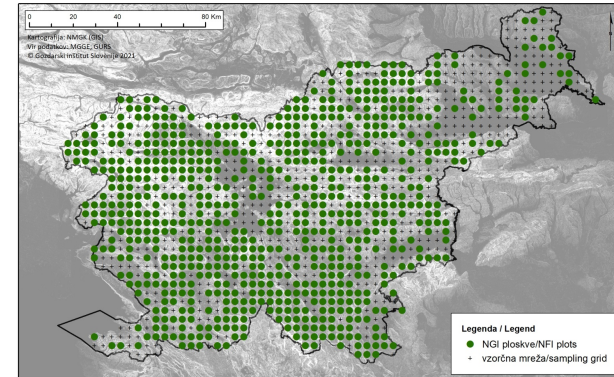


National Forestry Inventory



NFI

Monitoring of state and development of Slovenian forests

Within National Forest Inventory (NFI) forests of Slovenia are monitored and measured. NFI provides extensive and in depth survey of all slovenia forests, including informations about composition, condition, distribution and size of our forests. It is of great importance for monitoring changes of forests through time, for developing suitable policy measures and for further support of sustainable management of forests. The basis for the inventory is a systematic sample of plots on a 4km x 4km grid. The selection of inventory plots is based on the use of lidar and aerial images. With their help, plots that are not located in the forest are eliminated, and they are also helpful in assesment of forests at inaccessible plots. A special data acquisition application was developed for the purpose of field inventory. This guides the enumerator through the inventory process, and at the same time the data is already digitized and ready for further processing. The application is also connected to a GPE device, which allows the precise determination of the sampling point.

PODROBNOSTI

IZVOR LESA

--

TIP LESA

--

VRSTA OBRAVNAVANEGA LESA

--

VPLIV NA OKOLJE IN BIODIVERZITETO

--

VPLIV NA PRIHODKE

--

POTENCIAL IZKORIŠČANJA

--

VOZLIŠČE

Jugovzhodno vozlišče

GOSPODARSKI VPLIV

--

POTREBNO SPECIFIČNO ZNANJE

--

POTENCIAL ZA MOBILIZACIJO

--

TRAJNOST - VREDNOST

--

ENOSTAVNOST IZVEDBE

--

ENOSTAVNOST IZVEDBE - OCENJEVANJE

--

KLJUČNI PREDPOGOJI

--

VRSTA DOGODKA, NA KATEREM JE BIL PREDSTAVLJEN TA BPI

--

VPLIV NA DELOVNA MESTA

--

STROŠKI IZVEDBE (EURO - €)

--

VEČ PODROBNOSTI

IZZIV

7. Ozaveščanje javnosti, socialna sprejemljivost in politična podpora gozdarstvu

DOMENA

Gojenje gozdov, gospodarjenje z gozdovi, odpornost, Razvoj programske opreme ekosistemske storitve

Motnje, tveganja, odziv na naravne nesreče

TIP REŠITVE

KLJUČNE BESEDE

--

DIGITALNE REŠITVE

Da

INOVACIJA

Da

IZVORNA DRŽAVA

Slovenija

OBSEG UPORABE

Nacionalni

ZAČETNO IN KONČNO LETO

2000 -

KONTAKTN PODATKI

LASTNIK OZ. AVTOR

Slovenian Forestry Institute

Mitja Skudnik

mitja.skudnik@gozdis.si

<https://www.gozdis.si/oddelek-za-nacrtovanje-in-monitoring-gozdov-in-krajine/>

POROČEVALEC

Slovenian Forestry Institute

Polona Hafner

polona.hafner@gozdis.si

REFERENCES AND RESOURCES

SPLETNA STRAN

https://www.gozdis.si/Nacionalna-gozdna-inventura_1/

VIRI

--

SPLETNA STRAN PROJEKTA

--

REFERENCA PROJEKTA

<https://dirros.openscience.si/lzpisGradiva.php?id=14428&lang=eng>

LOGOTIP DOBRE PRAKSE



LOGOTIP GLAVNE ORGANIZACIJE



PROJEKT, V OKVIRU KATEREGA SO BILI ZBRANI OSNOVNI PODATKI

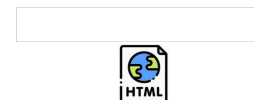
Rosewood 4.0

DATUM OBJAVE

14 Sep 2021



This project has received funding from the European Union's Horizon 2020 research and innovation programme under grant agreement No. 862681



A TOOL FROM ROSEWOOD 4.0, DESIGNED AND DEVELOPED BY

