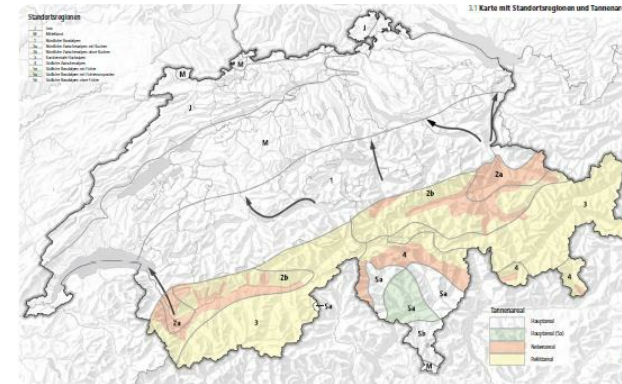


Sustainability and success control for protecting forest's



A practical tool intended to guarantee the survival of a sustainable and effective protective forest at a minimum cost. Based on the assumption that the state of the forest is crucial to its ability to provide effective protection against natural hazards, silvicultural requirement profiles are described for different forest locations and natural hazards. This method gives an overview for every protection forest type, helps to clarify the management goal and shows the achieved management results. It makes them verifiable and simplifies the discussion in the field of protective forest management for practitioners, authorities and academic staff. Standard method to characterize protection forest's needs and to manage them according to identical objective criteria. The management results are verifiable for the protection forest authorities. This method is used to improve the quality in protection forest management.

PODROBNOSTI

IZVOR LESA

Gozd

TIP LESA

Okrogli les

VRSTA OBRAVNAVANEGA LESA

Stemwood

VPLIV NA OKOLJE IN BIODIVERZITETO

Easy

VPLIV NA PRIHODKE

Positive

POTENCIAL IZKORIŠČANJA

--

VOZLIŠČE

--

GOSPODARSKI VPLIV

Positive

POTREBNO SPECIFIČNO ZNANJE

POTENCIAL ZA MOBILIZACIJO

- 10 m³/ha

TRAJNOST - VREDNOST

--

ENOSTAVNOST IZVEDBE

--

ENOSTAVNOST IZVEDBE - OCENJEVANJE

--

KLJUČNI PREDPOGOJI

Silvicultural knowledge

VRSTA DOGODKA, NA KATEREM JE BIL PREDSTAVLJEN TA BPI

--

VPLIV NA DELOVNA MESTA

Positive

STROŠKI IZVEDBE (EURO - €)

--

VEČ
PODROBNOSTI

IZZIV

--

DOMENA

Gojenje gozdov, gospodarjenje z gozdovi, odpornost, --
ekosistemske storitve

TIP REŠITVE

KLJUČNE BESEDE

--

DIGITALNE REŠITVE

No

INOVACIJA

Ne

IZVORNA DRŽAVA

Švica

OBSEG UPORABE

Nacionalni

ZAČETNO IN KONČNO LETO

2005 - 2005

KONTAKTN
PODATKI

LASTNIK OZ. AVTOR

POROČEVALEC

info@bafu.admin.ch

REFERENCES
AND RESOURCES

SPLETNA STRAN

<https://www.bafu.admin.ch/bafu/en/home/topics/forest/publications-studies/publications/nachhaltigkeit-und-erfolgskontrolle-im-schutzwald.html>

VIRI

--

SPLETNA STRAN PROJEKTA

--

REFERENCA PROJEKTA

--

PROJEKT, V OKVIRU KATEREGA SO BILI ZBRANI OSNOVNI PODATKI

Rosewood

DATUM OBJAVE

16 Sep 2019



This project has received funding from the European Union's Horizon 2020 research and innovation programme under grant agreement No. 862681

A TOOL FROM ROSEWOOD 4.0, DESIGNED AND DEVELOPED BY

