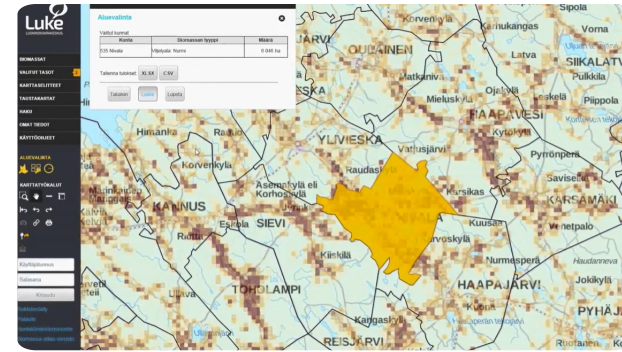


Biomass Atlas | Web-based forest resource map service



Biomass Atlas is an open service which collects the location data of biomasses under one, single user interface. Developed by Luke together with Finnish organizations SYKE, TAPIO, UEF and UVA, and by the funding of the Finnish Ministry of Agriculture and Forestry, the service enables calculations of the amount of biomass in a given geographical area, as well as examining the opportunities and restrictions to utilise the biomass.

The map user interface is easy to use and allows user to watch, analyse and report biomasses from forestry, agriculture and biodegradable wastes from communities and industry. You will find approximately 300 map layers of different biomass types or land use categories in map user interface.

Based on Biomass Atlas, assessments of regional availability of biomass, procurement and logistical costs of biomass, procurement technology and optimization in Luke and other organizations have been successfully accomplished. Analyses of content of biomasses, their nutrients, energy potential, and the nutrient recycling have been optimized regionally using Biomass Atlas.

The potential to utilize biomass regionally can be assessed with focus in employment, regional economy or environmental impact. It is also possible to make scenarios, how these things will develop in the future.

The biomass data is planned to support investment decisions and sustainable use of natural resources, for example, and to help decision-makers to do sustainable energy politics. At the moment Biomass Atlas is available in Finnish. International version of Biomass Atlas will be built in cooperation with Baltic Forbio project, which starts at autumn 2017 and exports the Biomass Atlas concept to Sweden and Baltic sea countries. In Biomass Atlas you will find GIS data and maps of different biomass and land use types:

- multisource national forest inventory data describes biomass that is growing in forests
- forest chip potential
- field and crop areas
- crops and crop side streams
- manure of production animals

- biowaste from communities
- biodegradable waste from companies in scale that requires environmental authorization (VAHTI-database).

Field area, crops and waste data is updated yearly. Manure data is updated when needed, and forest data approximately in every five years. All the data in Biomass Atlas is described also in Finnish metadataportal for geodata, Paikkatietohakemisto.

PODROBNOSTI

IZVOR LESA

Gozd

TIP LESA

Okrogli les

VRSTA OBRAVNAVANEGA LESA

Stemwood; Above and below ground woody biomass

VPLIV NA OKOLJE IN BIODIVERZITETO

Medium

VPLIV NA PRIHODKE

Positive, Atlas can be used in planning processes of different organizations including companies

POTENCIAL IZKORIŠČANJA

--

VOZLIŠČE

Severno vozlišče

GOSPODARSKI VPLIV

Positive, Atlas can be used in planning processes of different organizations including companies

POTENCIAL ZA MOBILIZACIJO

Not possible to assess.

TRAJNOST - VREDNOST

--

ENOSTAVNOST IZVEDBE

Medium, IT skills needed

ENOSTAVNOST IZVEDBE - OCENJEVANJE

--

KLJUČNI PREDPOGOJI

Web pages, see above.

VRSTA DOGODKA, NA KATEREM JE BIL PREDSTAVLJEN TA BPI

--

VPLIV NA DELOVNA MESTA

Positive, Atlas can be used in planning processes of different organizations including companies

STROŠKI IZVEDBE (EURO - €)

--

POTREBNO SPECIFIČNO ZNANJE

IT skills

VEČ PODROBNOSTI

IZZIV

5. Izboljšanje gospodarske in ekološke učinkovitosti gozdne oskrbovalne verige

KLJUČNE BESEDE

--

IZVORNA DRŽAVA

Finska

DOMENA

Gojenje gozdov, gospodarjenje z gozdovi, odpornost, ekosistemske storitve

DIGITALNE REŠITVE

Da

OBSEG UPORABE

Nacionalni

TIP REŠITVE

Podatkovna platforma, vozlišča podatkov, odprti podatki

INOVACIJA

Ne

ZAČETNO IN KONČNO LETO

2017 -

KONTAKTNI PODATKI

LASTNIK OZ. AVTOR

Natural Resources Institute Finland (Luke)

Eeva Lehtonen

eeva.lehtonen@luke.fi

<https://www.luke.fi/en/>

POROČEVALEC

REFERENCES AND RESOURCES

SPLETNA STRAN

<https://www.luke.fi/biomassa-atlas/en/>

SPLETNA STRAN PROJEKTA

--

REFERENCA PROJEKTA

--

VIRI

--

LOGOTIP DOBRE PRAKSE



LOGOTIP GLAVNE ORGANIZACIJE

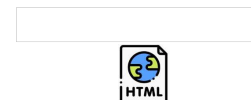


PROJEKT, V OKVIRU KATEREGA SO BILI ZBRANI OSNOVNI PODATKI

Rosewood

DATUM OBJAVE

17 Sep 2019



This project has received funding from the European Union's Horizon 2020 research and innovation programme under grant agreement No. 862681

A TOOL FROM ROSEWOOD 4.0, DESIGNED AND DEVELOPED BY

