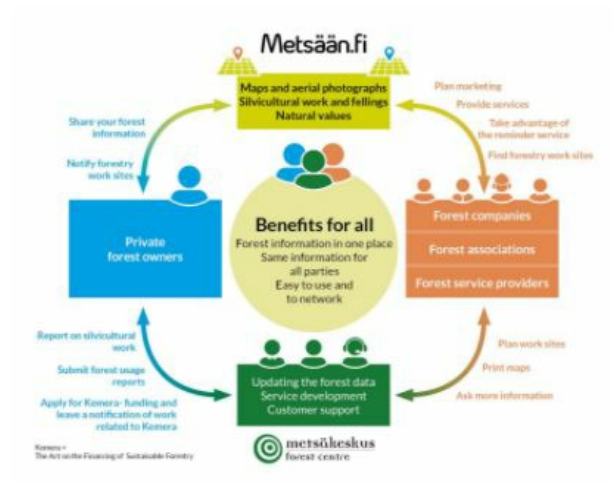


eServices for forest owners and service



Metsään.fi provides eServices for forest owners and forestry service providers. The online application shows the silvicultural possibilities of each forest estate and their compartments.

The Metsään.fi-service included in the Metsään.fi-website is a free e-service for forest owners and corporate actors (companies, associations and service providers) in the forest sector, which aim is to support active decision-making among forest owners by offering forest resource data and maps on forest properties, by making contacts with the authorities easier through online services and to act as a platform for offering forest services, among other things. In addition to the Metsään.fi-service, the website includes open forest data services that offer the users national forest resource data that is not linked with personal information. Metsään.fi is quite easy to use and it provides the forest owner many new flexible services. It is safe system because strong identification is needed. When you log in to

the Metsään.fi service, you will see all the forest holdings you own. You will also see the jointly owned forest holdings where you are a single shareholder. You have one place where you can take care of your forest affairs and plan the management of your forest assets. You will have free access to forest data and a transaction service collected with public funds.

DETALJER

VEDENS URSPRUNG

--

TRÄTYP

--

TYP AV TRÄ

--

PÅVERKAN PÅ MILJÖ & BIOLOGISK MÅNGFALD

Very positive, shows the environmental values (habitats of special importance) in the compartments of the forest estate

EKONOMISK EFFEKT

Positive, forest owners sell wood and services providers get income

KOMMERSIELL POTENTIAL

--

NAV

--

EKONOMISK PÅVERKAN

Communication between forest owners and forestry service providers

SPECIFIKA KUNSKAPSBEHOV

MOBILISERINGSPOTENTIAL

--

HÅLLBARHETS POTENTIAL - VÄRDE

--

ENKEL IMPLEMENTERING

--

ENKEL IMPLEMENTERING - UTVÄRDERING

Enkelt

NYCKEL FÖRUTSÄTTNINGAR

--

TYP AV EVENEMANG DÄR DENNA BPI HAR PRESENTERATS

--

EFFEKT ANTAL ANSTÄLLDA

Positive, new jobs for service providers

KOSTNADER FÖR IMPLEMENTERING (EURO - €)

--

Not any specific knowledge needed

MER INFORMATION

UTMANING SOM ADRESSERAS

--
Inventering, värdering, övervakning
Skogsförvaltning, skogskjötsel, ekosystemtjänster

NYCKELORD

virtual tool

3D

UPPHOVSLAND

--

DOMÄN

Inventering, värdering, övervakning
Skogsförvaltning, skogskjötsel, ekosystemtjänster

DIGITAL LÖSNING

Ja

POTENTIAL

Nationell

TYPE AV LÖSNING

Rådgivning og serviceverktyg för skogsägare

INNOVASION

Nej

START OCH SLUTÅR

2012 -

KONTAKT INFORMASION

ÄGARE ELLER FÖRFATTARE

Finnish Forestry Center

Minttu Koponen

minttu.koponen@metsakeskus.fi

<https://www.metsakeskus.fi/en>

RAPPORTÖR

Lapland University of Applied Sciences

Merja Laajanen

merja.laajanen@lapinamk.fi

REFERENCES AND RESOURCES

HEMSIDA (HUVUDSIDA)

<https://www.metsakeskus.fi/fi/asiointi/metsaanfi>

PROJEKTETS HEMSIDA

--

PROJEKTFERENS

--

RESURSER

PROJEKT SOM DETTA FACTSHEET SKAPATS INOM

Rosewood 4.0

DATUM FÖR INLÄGG

12 aug 2021



This project has received funding from the European Union's Horizon 2020 research and innovation programme under grant agreement No. 862681

A TOOL FROM ROSEWOOD 4.0, DESIGNED AND DEVELOPED BY

